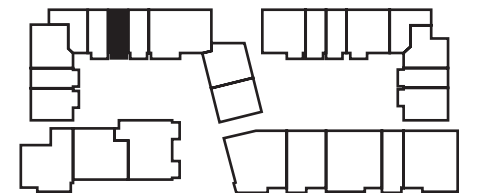
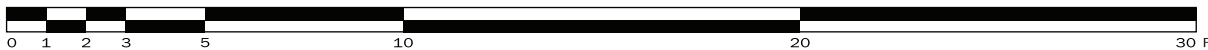
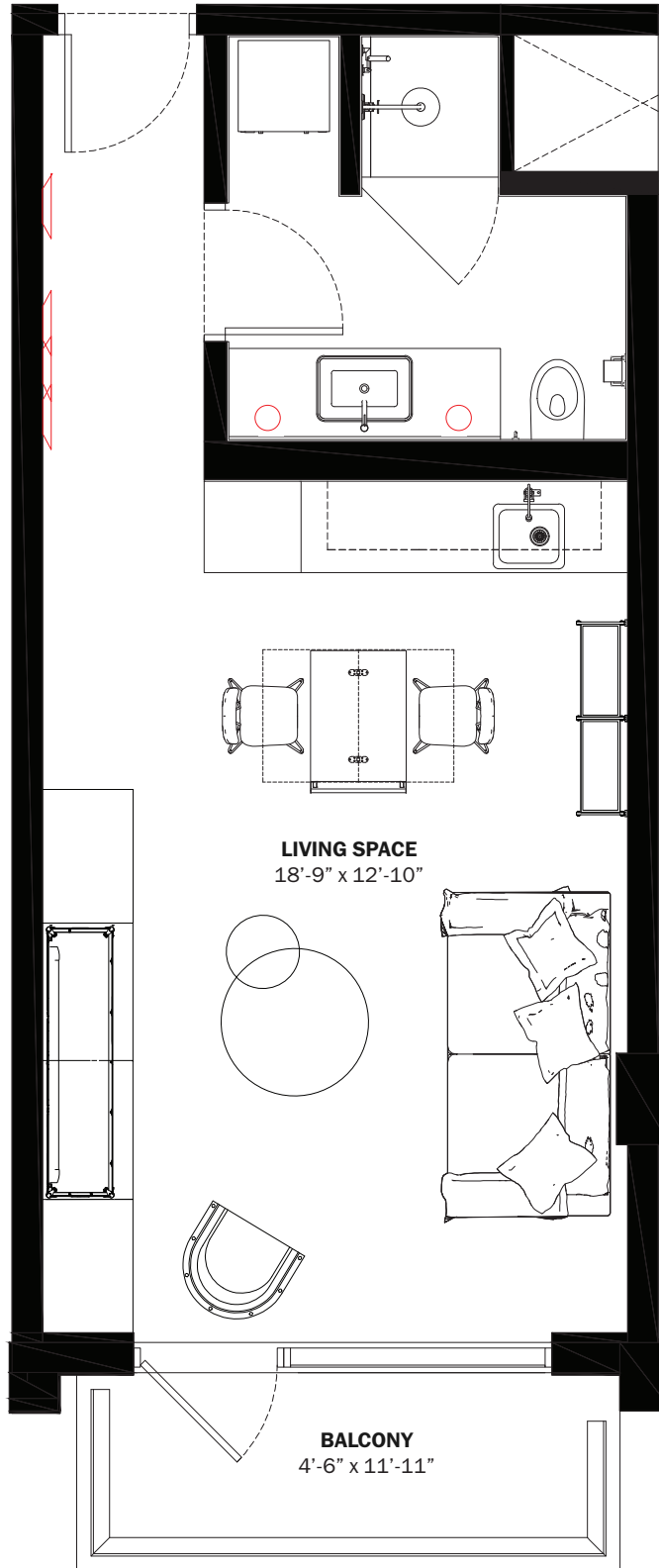


S

A1

INTERIORS AREA: 405 SQ FT 37.7 M²
 TERRACE AREA: 61 SQ FT 5.7 M²
 TOTAL RESIDENCE: 466 SQ FT 43.3 M²
 ID 310 - 3RD LEVEL



28th STREET



BELINVEST
CREATING VALUE

DIESEL HEADQUARTERS
VIA DELL'INDUSTRIA 4/6, BREGANZE (VI)
45°41'30.7" N 11°33'41.8" E

DIESEL WYNWOOD CONDOMINIUM
148 NW 28TH ST. MIAMI, FL 33127
25°48'10.0" N 80°11'53.1" W

RR:55
© COPYRIGHT DIESEL - IND 1978

ORAL REPRESENTATIONS CANNOT BE RELIED UPON AS CORRECTLY STATING THE REPRESENTATIONS OF THE DEVELOPER. FOR CORRECT REPRESENTATIONS, MAKE REFERENCE TO THIS BROCHURE AND TO THE DOCUMENTS REQUIRED BY SECTION 718.503, FLORIDA STATUTES, TO BE FURNISHED BY A DEVELOPER TO A BUYER OR LESSEE.

These materials are not intended to be an offer to sell, or solicitation to buy a unit in the condominium. Such an offering shall only be made pursuant to the prospectus (offering circular) for the condominium and no statements should be relied upon unless made in the prospectus or in the applicable purchase agreement. In no event shall any solicitation, offer or sale of a unit in the condominium be made in, or to residents of, any state or country in which such activity would be unlawful. This is not an offer to sell nor a solicitation to purchase a condominium unit directed to any person where such an offer or solicitation is prohibited by law unless the condominium is registered if required or exempt. All prices, plans, specifications, features, amenities and other descriptions are preliminary and are subject to change without notice, as provided in your purchase agreement. Stated square footages and dimensions are measured to the exterior boundaries of the exterior walls and the centerline of interior demising walls and in fact vary from the square footage and dimensions that would be determined by using the description and definition of the "Unit" set forth in the Declaration (which generally only includes the interior airspace between the perimeter walls and excludes all interior structural components and other common elements). This method is generally used in sales materials and is provided to allow a prospective buyer to compare the Units with units in other condominium projects that utilize the same method. Measurements of rooms set forth on this floor plan are generally taken at the farthest points of each given room (as if the room were a perfect rectangle), without regard for any cutouts or variations. Accordingly, the area of the actual room will typically be smaller than the product obtained by multiplying the stated length and width. All dimensions are estimates which will vary with actual construction, and all floor plans, specifications and other development plans are subject to change and will not necessarily accurately reflect the final plans and specifications for the development. All depictions of appliances, counters, soffits, floor coverings and other matters of detail, including, without limitation, items of finish and decoration, are conceptual only and are not necessarily included in each Unit.

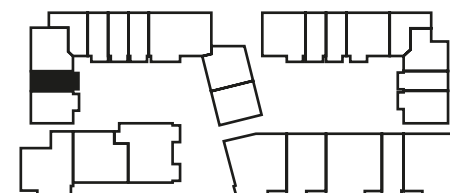
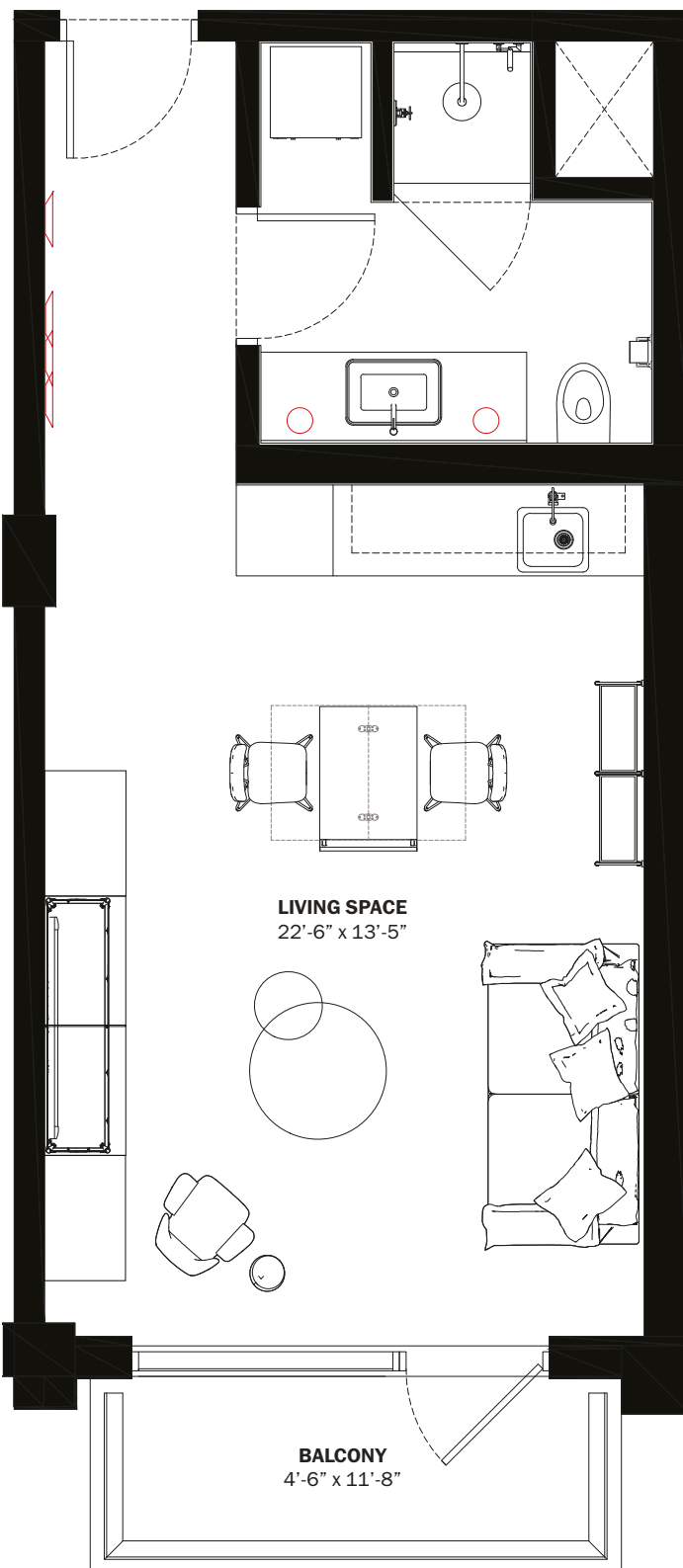
S

Diesel Wynwood
S Residences
Floor Plans

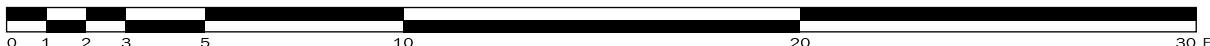
S

A2

A/C INTERIOR AREA:	413 SQ FT	38.4 M ²
TERRACE AREA:	54 SQ FT	5.1 M ²
TOTAL RESIDENCE:	467 SQ FT	43.5 M ²
FLOORS:	2—7	



28th STREET



BELINVEST
CREATING VALUE

ONE | **Sotheby's**
INTERNATIONAL REALTY

DIESEL HEADQUARTERS
VIA DELL'INDUSTRIA 4/6, BREGANZE (VI)
45°41'30.7" N 11°33'41.8" E

DIESEL WYNWOOD CONDOMINIUM
148 NW 28TH ST. MIAMI, FL 33127
25°48'10.0" N 80°11'53.1" W

RR:55
© COPYRIGHT DIESEL - IND 1978

ORAL REPRESENTATIONS CANNOT BE RELIED UPON AS CORRECTLY STATING THE REPRESENTATIONS OF THE DEVELOPER. FOR CORRECT REPRESENTATIONS, MAKE REFERENCE TO THIS BROCHURE AND TO THE DOCUMENTS REQUIRED BY SECTION 718.503, FLORIDA STATUTES, TO BE FURNISHED BY A DEVELOPER TO A BUYER OR LESSEE.

These materials are not intended to be an offer to sell, or solicitation to buy a unit in the condominium. Such an offering shall only be made pursuant to the prospectus (offering circular) for the condominium and no statements should be relied upon unless made in the prospectus or in the applicable purchase agreement. In no event shall any solicitation, offer or sale of a unit in the condominium be made in, or to residents of, any state or country in which such activity would be unlawful. This is not an offer to sell nor a solicitation to purchase a condominium unit directed to any person where such an offer or solicitation is prohibited by law unless the condominium is registered if required or exempt. All prices, plans, specifications, features, amenities and other descriptions are preliminary and are subject to change without notice, as provided in your purchase agreement. Stated square footages and dimensions are measured to the exterior boundaries of the exterior walls and the centerline of interior demising walls and in fact vary from the square footage and dimensions that would be determined by using the description and definition of the "Unit" set forth in the Declaration (which generally only includes the interior airspace between the perimeter walls and excludes all interior structural components and other common elements). This method is generally used in sales materials and is provided to allow a prospective buyer to compare the Units with units in other condominium projects that utilize the same method. Measurements of rooms set forth on this floor plan are generally taken at the farthest points of each given room (as if the room were a perfect rectangle), without regard for any cutouts or variations. Accordingly, the area of the actual room will typically be smaller than the product obtained by multiplying the stated length and width. All dimensions are estimates which will vary with actual construction, and all floor plans, specifications and other development plans are subject to change and will not necessarily accurately reflect the final plans and specifications for the development. All depictions of appliances, counters, soffits, floor coverings and other matters of detail, including, with out limitation, items of finish and decoration, are conceptual only and are not necessarily included in each Unit.

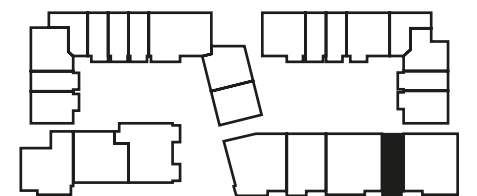
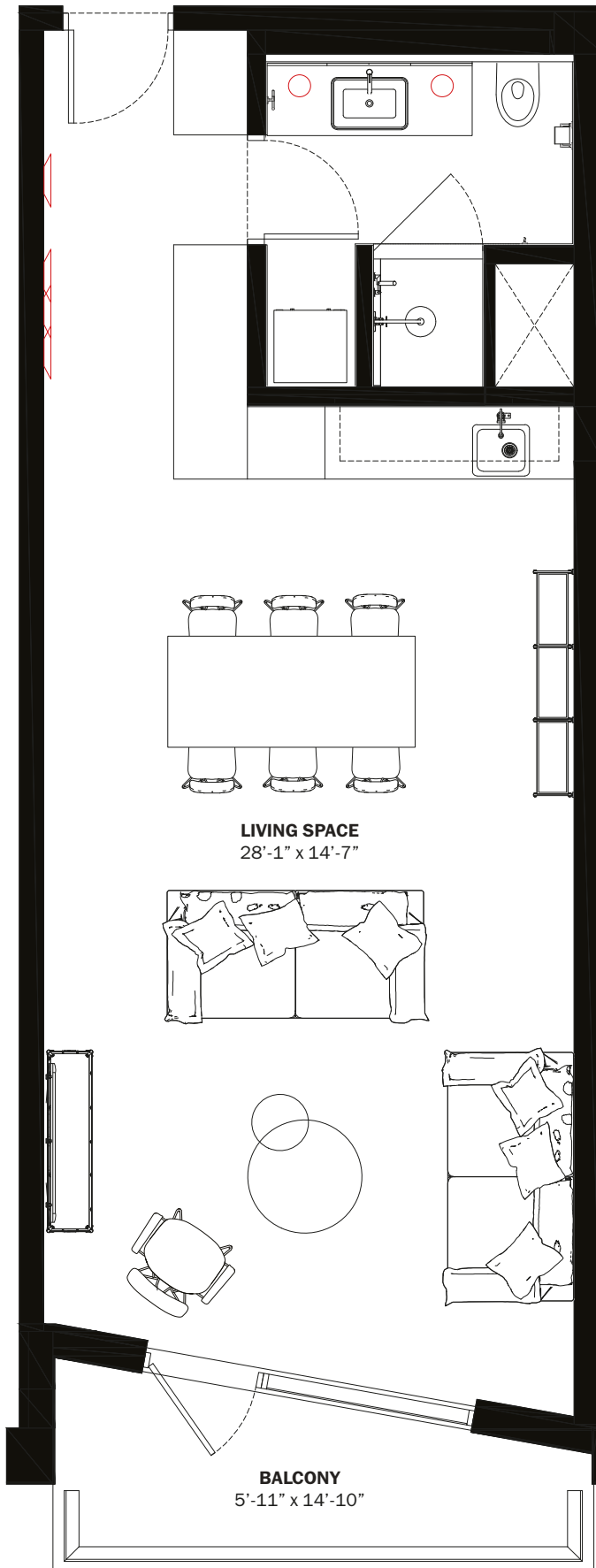
S

Diesel Wynwood
S Residences
Floor Plans

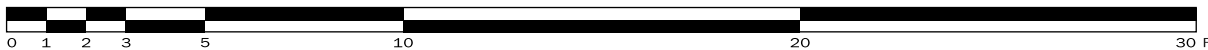
S

A3

A/C INTERIOR AREA: 575 SQ FT 53.5 M²
 TERRACE AREA: 69 SQ FT 6.5 M²
 TOTAL RESIDENCE: 644 SQ FT 60 M²
 FLOORS: 2—7



28th STREET



BELINVEST
CREATING VALUE

ONE | **Sotheby's**
INTERNATIONAL REALTY

DIESEL HEADQUARTERS
VIA DELL'INDUSTRIA 4/6, BREGANZE (VI)
45°41'30.7" N 11°33'41.8" E

DIESEL WYNWOOD CONDOMINIUM
148 NW 28TH ST. MIAMI, FL 33127
25°48'10.0" N 80°11'53.1" W

RR:55
© COPYRIGHT DIESEL - IND 1978

ORAL REPRESENTATIONS CANNOT BE RELIED UPON AS CORRECTLY STATING THE REPRESENTATIONS OF THE DEVELOPER. FOR CORRECT REPRESENTATIONS, MAKE REFERENCE TO THIS BROCHURE AND TO THE DOCUMENTS REQUIRED BY SECTION 718.503, FLORIDA STATUTES, TO BE FURNISHED BY A DEVELOPER TO A BUYER OR LESSEE.

These materials are not intended to be an offer to sell, or solicitation to buy a unit in the condominium. Such an offering shall only be made pursuant to the prospectus (offering circular) for the condominium and no statements should be relied upon unless made in the prospectus or in the applicable purchase agreement. In no event shall any solicitation, offer or sale of a unit in the condominium be made in, or to residents of, any state or country in which such activity would be unlawful. This is not an offer to sell nor a solicitation to purchase a condominium unit directed to any person where such an offer or solicitation is prohibited by law unless the condominium is registered if required or exempt. All prices, plans, specifications, features, amenities and other descriptions are preliminary and are subject to change without notice, as provided in your purchase agreement. Stated square footages and dimensions are measured to the exterior boundaries of the exterior walls and the centerline of interior demising walls and in fact vary from the square footage and dimensions that would be determined by using the description and definition of the "Unit" set forth in the Declaration (which generally only includes the interior airspace between the perimeter walls and excludes all interior structural components and other common elements). This method is generally used in sales materials and is provided to allow a prospective buyer to compare the Units with units in other condominium projects that utilize the same method. Measurements of rooms set forth on this floor plan are generally taken at the farthest points of each given room (as if the room were a perfect rectangle), without regard for any cutouts or variations. Accordingly, the area of the actual room will typically be smaller than the product obtained by multiplying the stated length and width. All dimensions are estimates which will vary with actual construction, and all floor plans, specifications and other development plans are subject to change and will not necessarily accurately reflect the final plans and specifications for the development. All depictions of appliances, counters, soffits, floor coverings and other matters of detail, including, without limitation, items of finish and decoration, are conceptual only and are not necessarily included in each Unit.

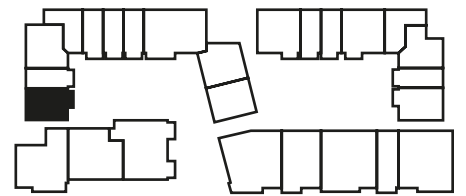
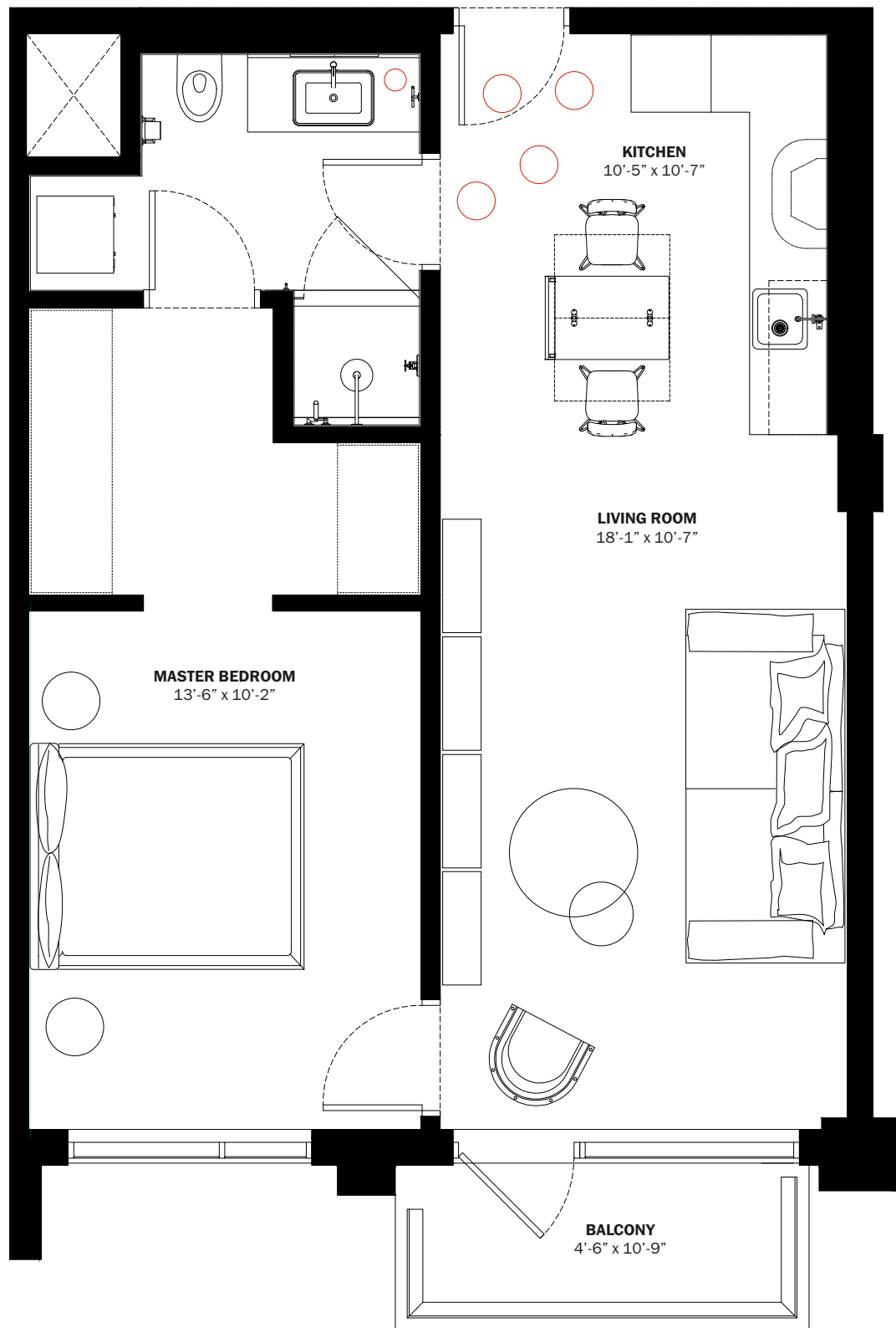
S

Diesel Wynwood
S Residences
Floor Plans

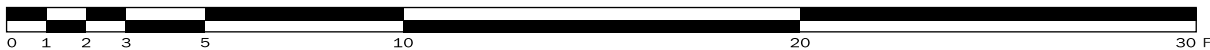
M

B1

A/C INTERIOR AREA: 654 SQ FT 60.8 M²
 TERRACE AREA: 53 SQ FT 5 M²
 TOTAL RESIDENCE: 707 SQ FT 65.8 M²
 FLOORS: 2—7



28th STREET



BELINVEST
CREATING VALUE

ONE | **Sotheby's**
INTERNATIONAL REALTY

DIESEL HEADQUARTERS
VIA DELL'INDUSTRIA 4/6, BREGANZE (VI)
45°41'30.7" N 11°33'41.8" E

DIESEL WYNWOOD CONDOMINIUM
148 NW 28TH ST. MIAMI, FL 33127
25°48'10.0" N 80°11'53.1" W

RR:55
© COPYRIGHT DIESEL - IND 1978

ORAL REPRESENTATIONS CANNOT BE RELIED UPON AS CORRECTLY STATING THE REPRESENTATIONS OF THE DEVELOPER. FOR CORRECT REPRESENTATIONS, MAKE REFERENCE TO THIS BROCHURE AND TO THE DOCUMENTS REQUIRED BY SECTION 718.503, FLORIDA STATUTES, TO BE FURNISHED BY A DEVELOPER TO A BUYER OR LESSEE.

These materials are not intended to be an offer to sell, or solicitation to buy a unit in the condominium. Such an offering shall only be made pursuant to the prospectus (offering circular) for the condominium and no statements should be relied upon unless made in the prospectus or in the applicable purchase agreement. In no event shall any solicitation, offer or sale of a unit in the condominium be made in, or to residents of, any state or country in which such activity would be unlawful. This is not an offer to sell nor a solicitation to purchase a condominium unit directed to any person where such an offer or solicitation is prohibited by law unless the condominium is registered if required or exempt. All prices, plans, specifications, features, amenities and other descriptions are preliminary and are subject to change without notice, as provided in your purchase agreement. Stated square footages and dimensions are measured to the exterior boundaries of the exterior walls and the centerline of interior demising walls and in fact vary from the square footage and dimensions that would be determined by using the description and definition of the "Unit" set forth in the Declaration (which generally only includes the interior airspace between the perimeter walls and excludes all interior structural components and other common elements). This method is generally used in sales materials and is provided to allow a prospective buyer to compare the Units with units in other condominium projects that utilize the same method. Measurements of rooms set forth on this floor plan are generally taken at the farthest points of each given room (as if the room were a perfect rectangle), without regard for any cutouts or variations. Accordingly, the area of the actual room will typically be smaller than the product obtained by multiplying the stated length and width. All dimensions are estimates which will vary with actual construction, and all floor plans, specifications and other development plans are subject to change and will not necessarily accurately reflect the final plans and specifications for the development. All depictions of appliances, counters, soffits, floor coverings and other matters of detail, including, without limitation, items of finish and decoration, are conceptual only and are not necessarily included in each Unit.

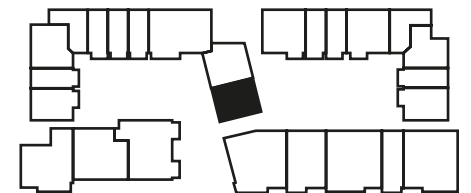
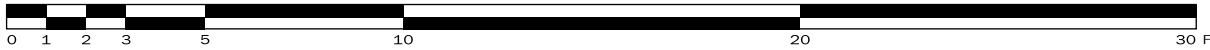
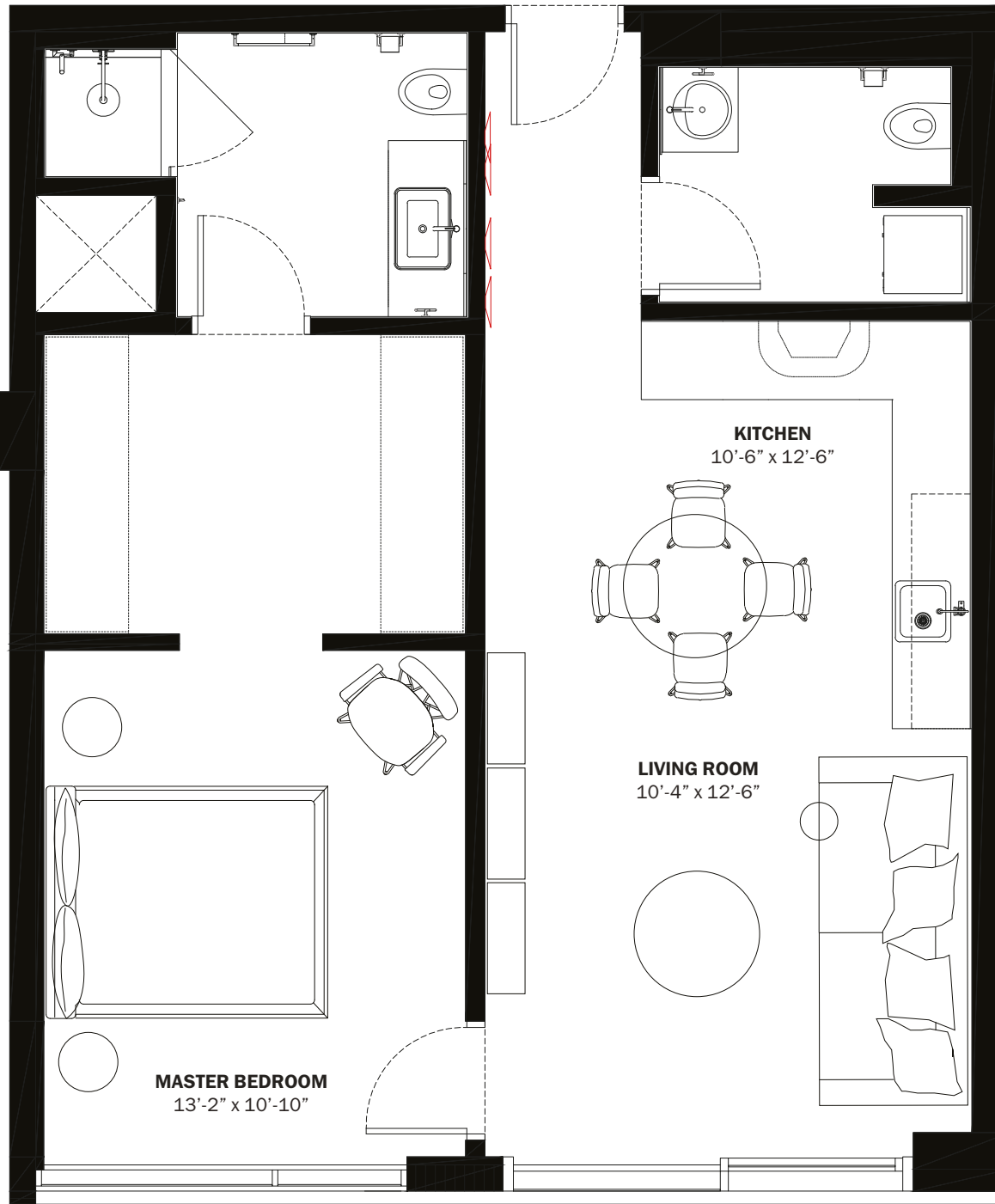
M

Diesel Wynwood
M Residences
Floor Plans

M

B2

A/C INTERIOR AREA: 731 SQ FT 68 M²
 TERRACE AREA: - -
 TOTAL RESIDENCE: 731 SQ FT 68 M²
 FLOORS: 3—6



28th STREET



BELINVEST
CREATING VALUE

ONE | **Sotheby's**
INTERNATIONAL REALTY

DIESEL HEADQUARTERS
VIA DELL'INDUSTRIA 4/6, BREGANZE (VI)
45°41'30.7" N 11°33'41.8" E

DIESEL WYNWOOD CONDOMINIUM
148 NW 28TH ST. MIAMI, FL 33127
25°48'10.0" N 80°11'53.1" W

RR:55
© COPYRIGHT DIESEL - IND 1978

ORAL REPRESENTATIONS CANNOT BE RELIED UPON AS CORRECTLY STATING THE REPRESENTATIONS OF THE DEVELOPER. FOR CORRECT REPRESENTATIONS, MAKE REFERENCE TO THIS BROCHURE AND TO THE DOCUMENTS REQUIRED BY SECTION 718.503, FLORIDA STATUTES, TO BE FURNISHED BY A DEVELOPER TO A BUYER OR LESSEE. These materials are not intended to be an offer to sell, or solicitation to buy a unit in the condominium. Such an offering shall only be made pursuant to the prospectus (offering circular) for the condominium and no statements should be relied upon unless made in the prospectus or in the applicable purchase agreement. In no event shall any solicitation, offer or sale of a unit in the condominium be made in, or to residents of, any state or country in which such activity would be unlawful. This is not an offer to sell nor a solicitation to purchase a condominium unit directed to any person where such an offer or solicitation is prohibited by law unless the condominium is registered if required or exempt. All prices, plans, specifications, features, amenities and other descriptions are preliminary and are subject to change without notice, as provided in your purchase agreement. Stated square footages and dimensions are measured to the exterior boundaries of the exterior walls and the centerline of interior demising walls and in fact vary from the square footage and dimensions that would be determined by using the description and definition of the "Unit" set forth in the Declaration (which generally only includes the interior airspace between the perimeter walls and excludes all interior structural components and other common elements). This method is generally used in sales materials and is provided to allow a prospective buyer to compare the Units with units in other condominium projects that utilize the same method. Measurements of rooms set forth on this floor plan are generally taken at the farthest points of each given room (as if the room were a perfect rectangle), without regard for any cutouts or variations. Accordingly, the area of the actual room will typically be smaller than the product obtained by multiplying the stated length and width. All dimensions are estimates which will vary with actual construction, and all floor plans, specifications and other development plans are subject to change and will not necessarily accurately reflect the final plans and specifications for the development. All depictions of appliances, counters, soffits, floor coverings and other matters of detail, including, with out limitation, items of finish and decoration, are conceptual only and are not necessarily included in each Unit.

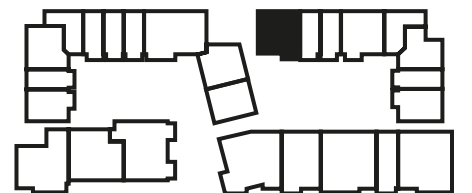
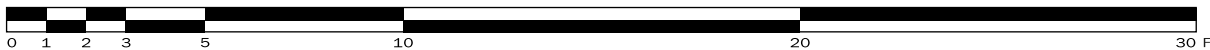
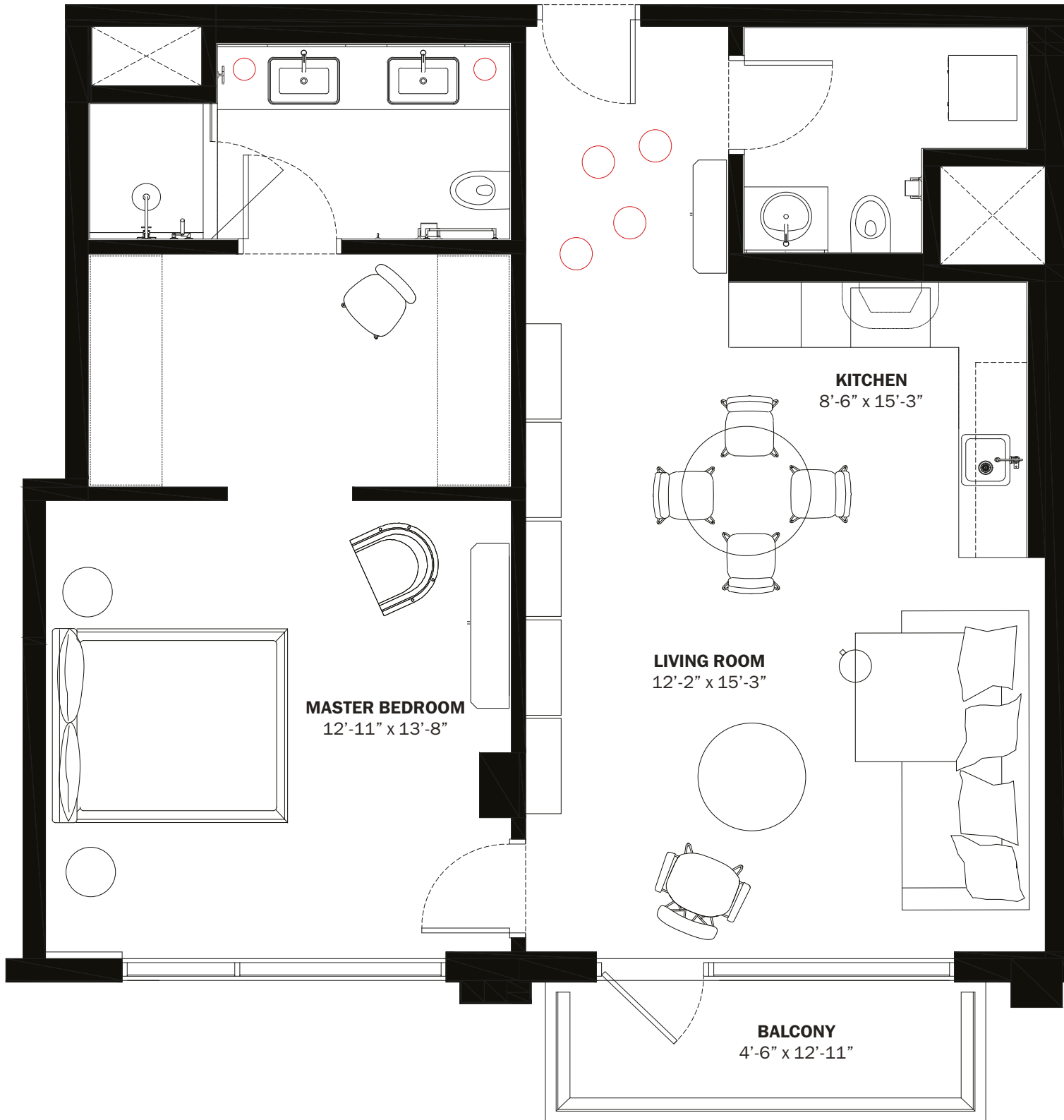
M

Diesel Wynwood
M Residences
Floor Plans

M

B3

A/C INTERIOR AREA: 855 SQ FT 79.5 M²
 TERRACE AREA: 71 SQ FT 6.6 M²
 TOTAL RESIDENCE: 926 SQ FT 86.1 M²
 FLOORS: 2—7



28th STREET



BELINVEST
CREATING VALUE

ONE | **Sotheby's**
INTERNATIONAL REALTY

DIESEL HEADQUARTERS
VIA DELL'INDUSTRIA 4/6, BREGANZE (VI)
45°41'30.7" N 11°33'41.8" E

DIESEL WYNWOOD CONDOMINIUM
148 NW 28TH ST. MIAMI, FL 33127
25°48'10.0" N 80°11'53.1" W

RR:55
© COPYRIGHT DIESEL - IND 1978

ORAL REPRESENTATIONS CANNOT BE RELIED UPON AS CORRECTLY STATING THE REPRESENTATIONS OF THE DEVELOPER. FOR CORRECT REPRESENTATIONS, MAKE REFERENCE TO THIS BROCHURE AND TO THE DOCUMENTS REQUIRED BY SECTION 718.503, FLORIDA STATUTES, TO BE FURNISHED BY A DEVELOPER TO A BUYER OR LESSEE.

These materials are not intended to be an offer to sell, or solicitation to buy a unit in the condominium. Such an offering shall only be made pursuant to the prospectus (offering circular) for the condominium and no statements should be relied upon unless made in the prospectus or in the applicable purchase agreement. In no event shall any solicitation, offer or sale of a unit in the condominium be made in, or to residents of, any state or country in which such activity would be unlawful. This is not an offer to sell nor a solicitation to purchase a condominium unit directed to any person where such an offer or solicitation is prohibited by law unless the condominium is registered if required or exempt. All prices, plans, specifications, features, amenities and other descriptions are preliminary and are subject to change without notice, as provided in your purchase agreement. Stated square footages and dimensions are measured to the exterior boundaries of the exterior walls and the centerline of interior demising walls and in fact vary from the square footage and dimensions that would be determined by using the description and definition of the "Unit" set forth in the Declaration (which generally only includes the interior airspace between the perimeter walls and excludes all interior structural components and other common elements). This method is generally used in sales materials and is provided to allow a prospective buyer to compare the Units with units in other condominium projects that utilize the same method. Measurements of rooms set forth on this floor plan are generally taken at the farthest points of each given room (as if the room were a perfect rectangle), without regard for any cutouts or variations. Accordingly, the area of the actual room will typically be smaller than the product obtained by multiplying the stated length and width. All dimensions are estimates which will vary with actual construction, and all floor plans, specifications and other development plans are subject to change and will not necessarily accurately reflect the final plans and specifications for the development. All depictions of appliances, counters, soffits, floor coverings and other matters of detail, including, without limitation, items of finish and decoration, are conceptual only and are not necessarily included in each Unit.

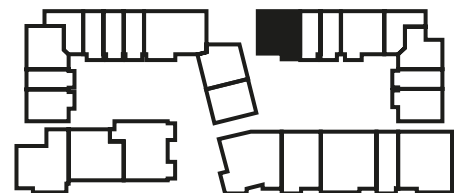
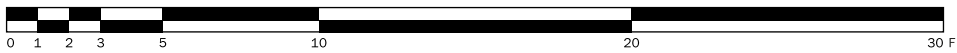
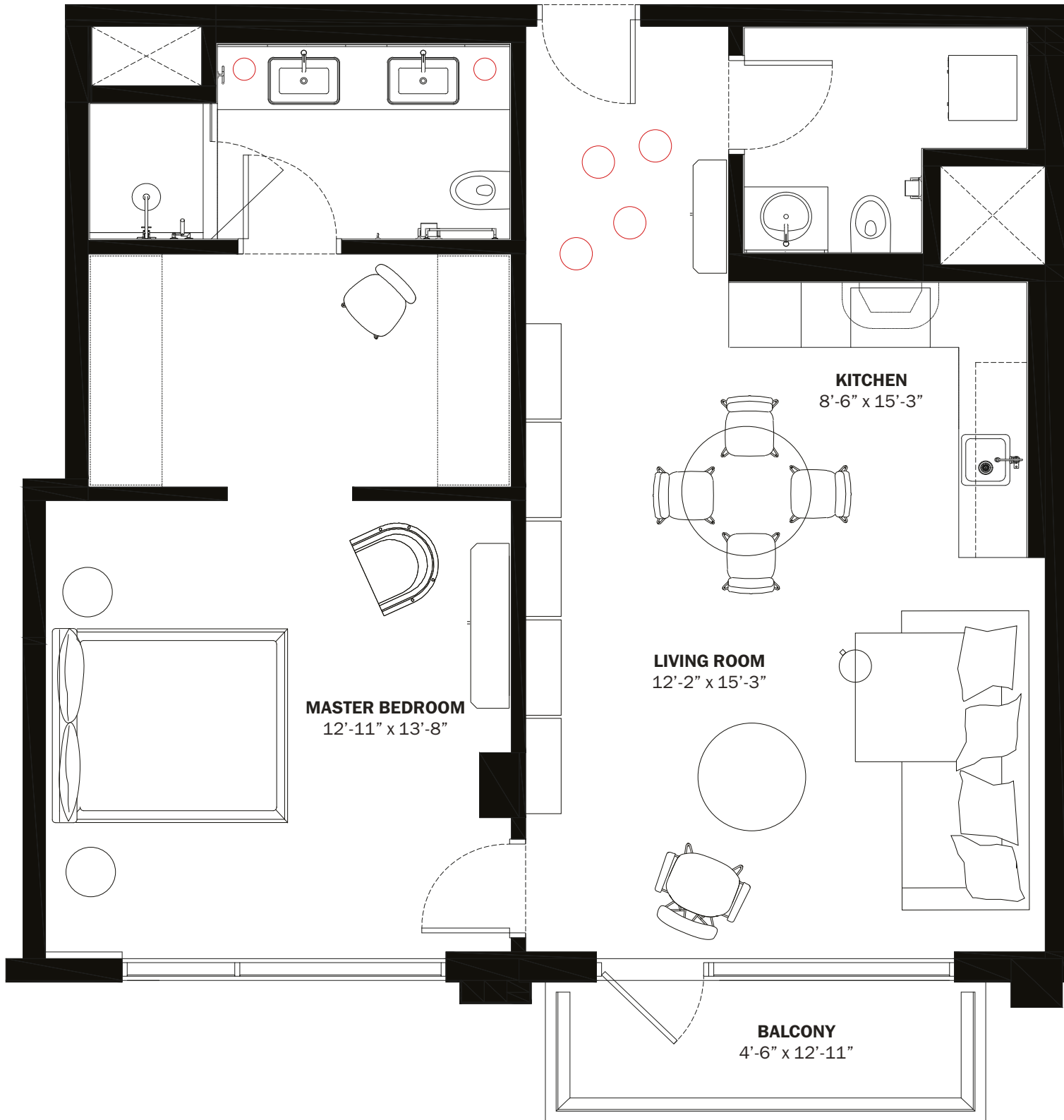
M

Diesel Wynwood
M Residences
Floor Plans

M

B3

A/C INTERIOR AREA: 855 SQ FT 79.5 M²
 TERRACE AREA: 71 SQ FT 6.6 M²
 TOTAL RESIDENCE: 926 SQ FT 86.1 M²
 FLOORS: 2—7



28th STREET



BELINVEST
CREATING VALUE

ONE | **Sotheby's**
INTERNATIONAL REALTY

DIESEL HEADQUARTERS
VIA DELL'INDUSTRIA 4/6, BREGANZE (VI)
45°41'30.7" N 11°33'41.8" E

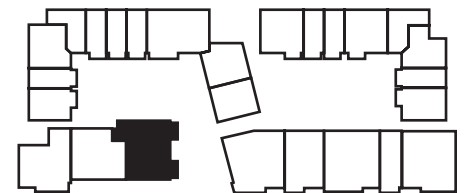
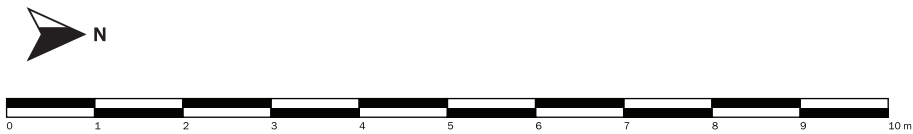
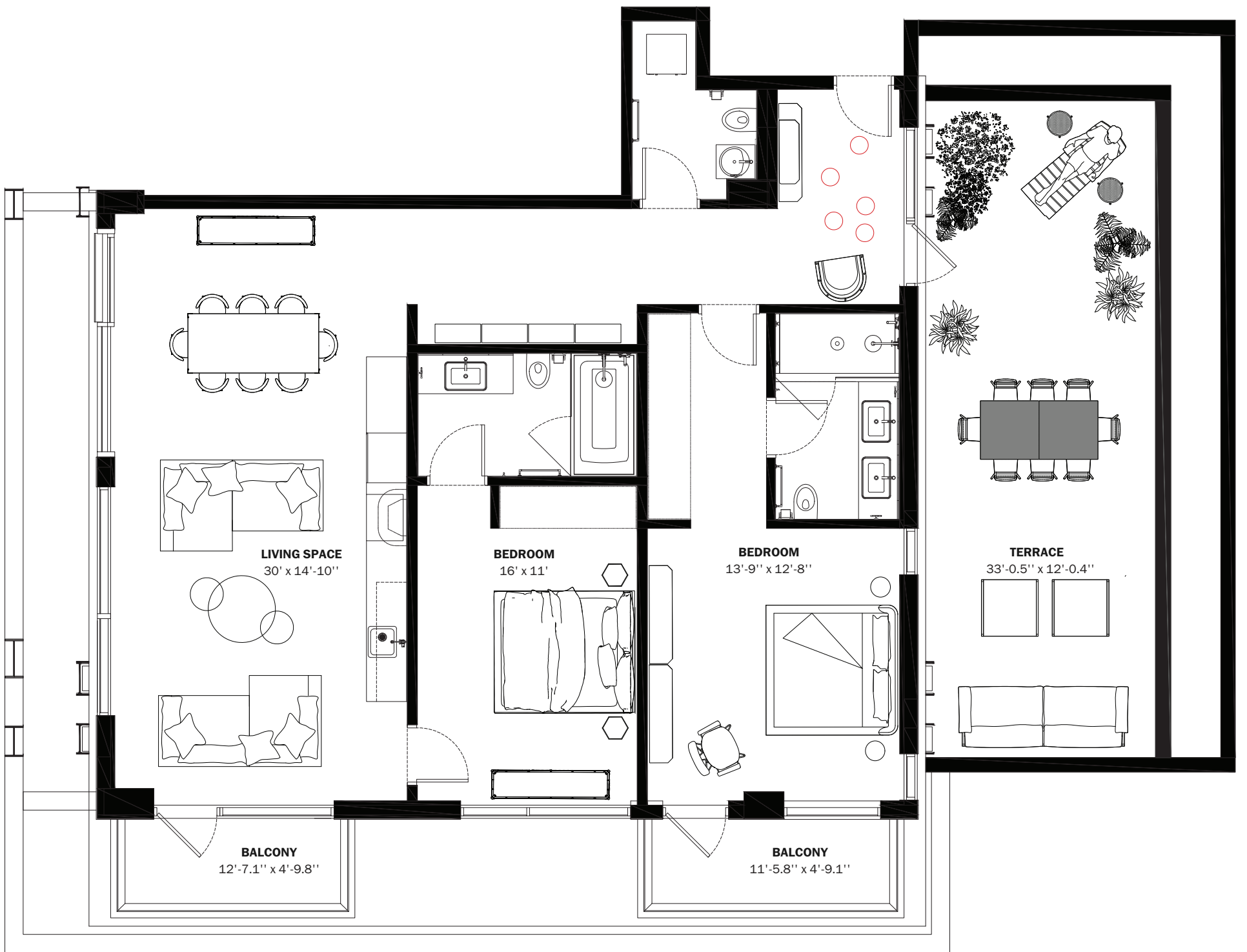
DIESEL WYNWOOD CONDOMINIUM
148 NW 28TH ST. MIAMI, FL 33127
25°48'10.0" N 80°11'53.1" W

RR:55
© COPYRIGHT DIESEL - IND 1978

ORAL REPRESENTATIONS CANNOT BE RELIED UPON AS CORRECTLY STATING THE REPRESENTATIONS OF THE DEVELOPER. FOR CORRECT REPRESENTATIONS, MAKE REFERENCE TO THIS BROCHURE AND TO THE DOCUMENTS REQUIRED BY SECTION 718.503, FLORIDA STATUTES, TO BE FURNISHED BY A DEVELOPER TO A BUYER OR LESSEE. These materials are not intended to be an offer to sell, or solicitation to buy a unit in the condominium. Such an offering shall only be made pursuant to the prospectus (offering circular) for the condominium and no statements should be relied upon unless made in the prospectus or in the applicable purchase agreement. In no event shall any solicitation, offer or sale of a unit in the condominium be made in, or to residents of, any state or country in which such activity would be unlawful. This is not an offer to sell nor a solicitation to purchase a condominium unit directed to any person where such an offer or solicitation is prohibited by law unless the condominium is registered if required or exempt. All prices, plans, specifications, features, amenities and other descriptions are preliminary and are subject to change without notice, as provided in your purchase agreement. Stated square footages and dimensions are measured to the exterior boundaries of the exterior walls and the centerline of interior demising walls and in fact vary from the square footage and dimensions that would be determined by using the description and definition of the "Unit" set forth in the Declaration (which generally only includes the interior airspace between the perimeter walls and excludes all interior structural components and other common elements). This method is generally used in sales materials and is provided to allow a prospective buyer to compare the Units with units in other condominium projects that utilize the same method. Measurements of rooms set forth on this floor plan are generally taken at the farthest points of each given room (as if the room were a perfect rectangle), without regard for any cutouts or variations. Accordingly, the area of the actual room will typically be smaller than the product obtained by multiplying the stated length and width. All dimensions are estimates which will vary with actual construction, and all floor plans, specifications and other development plans are subject to change and will not necessarily accurately reflect the final plans and specifications for the development. All depictions of appliances, counters, soffits, floor coverings and other matters of detail, including, without limitation, items of finish and decoration, are conceptual only and are not necessarily included in each Unit.

L D3

INTERIORS AREA: 1,387 SQ FT 128.9 M²
 TERRACE AREA: 725 SQ FT 67.4 M²
 TOTAL RESIDENCE: 2,112 SQ FT 196.3 M²
 ID 201 - 2ND LEVEL



28th STREET



BELINVEST
CREATING VALUE

DIESEL HEADQUARTERS
VIA DELL'INDUSTRIA 4/6, BREGANZE (VI)
45°41'30.7" N 11°33'41.8" E

DIESEL WYNWOOD CONDOMINIUM
148 NW 28TH ST. MIAMI, FL 33127
25°48'10.0" N 80°11'53.1" W

RR:55
© COPYRIGHT DIESEL - IND 1978

ORAL REPRESENTATIONS CANNOT BE RELIED UPON AS CORRECTLY STATING THE REPRESENTATIONS OF THE DEVELOPER. FOR CORRECT REPRESENTATIONS, MAKE REFERENCE TO THIS BROCHURE AND TO THE DOCUMENTS REQUIRED BY SECTION 718.503, FLORIDA STATUTES, TO BE FURNISHED BY A DEVELOPER TO A BUYER OR LESSEE. These materials are not intended to be an offer to sell, or solicitation to buy a unit in the condominium. Such an offering shall only be made pursuant to the prospectus (offering circular) for the condominium and no statements should be relied upon unless made in the prospectus or in the applicable purchase agreement. In no event shall any solicitation, offer or sale of a unit in the condominium be made in, or to residents of, any state or country in which such activity would be unlawful. This is not an offer to sell nor a solicitation to purchase a condominium unit directed to any person where such an offer or solicitation is prohibited by law unless the condominium is registered if required or exempt. All prices, plans, specifications, features, amenities and other descriptions are preliminary and are subject to change without notice, as provided in your purchase agreement. Stated square footages and dimensions are measured to the exterior boundaries of the exterior walls and the centerline of interior demising walls and in fact vary from the square footage and dimensions that would be determined by using the description and definition of the "Unit" set forth in the Declaration (which generally only includes the interior airspace between the perimeter walls and excludes all interior structural components and other common elements). This method is generally used in sales materials and is provided to allow a prospective buyer to compare the Units with units in other condominium projects that utilize the same method. Measurements of rooms set forth on this floor plan are generally taken at the farthest points of each given room (as if the room were a perfect rectangle), without regard for any cutouts or variations. Accordingly, the area of the actual room will typically be smaller than the product obtained by multiplying the stated length and width. All dimensions are estimates which will vary with actual construction, and all floor plans, specifications and other development plans are subject to change and will not necessarily accurately reflect the final plans and specifications for the development. All depictions of appliances, counters, soffits, floor coverings and other matters of detail, including, without limitation, items of finish and decoration, are conceptual only and are not necessarily included in each Unit.

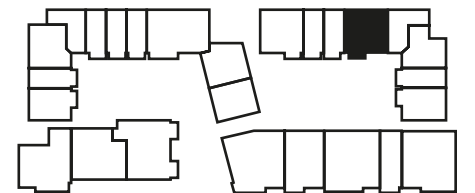
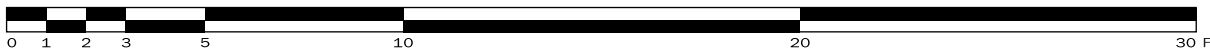
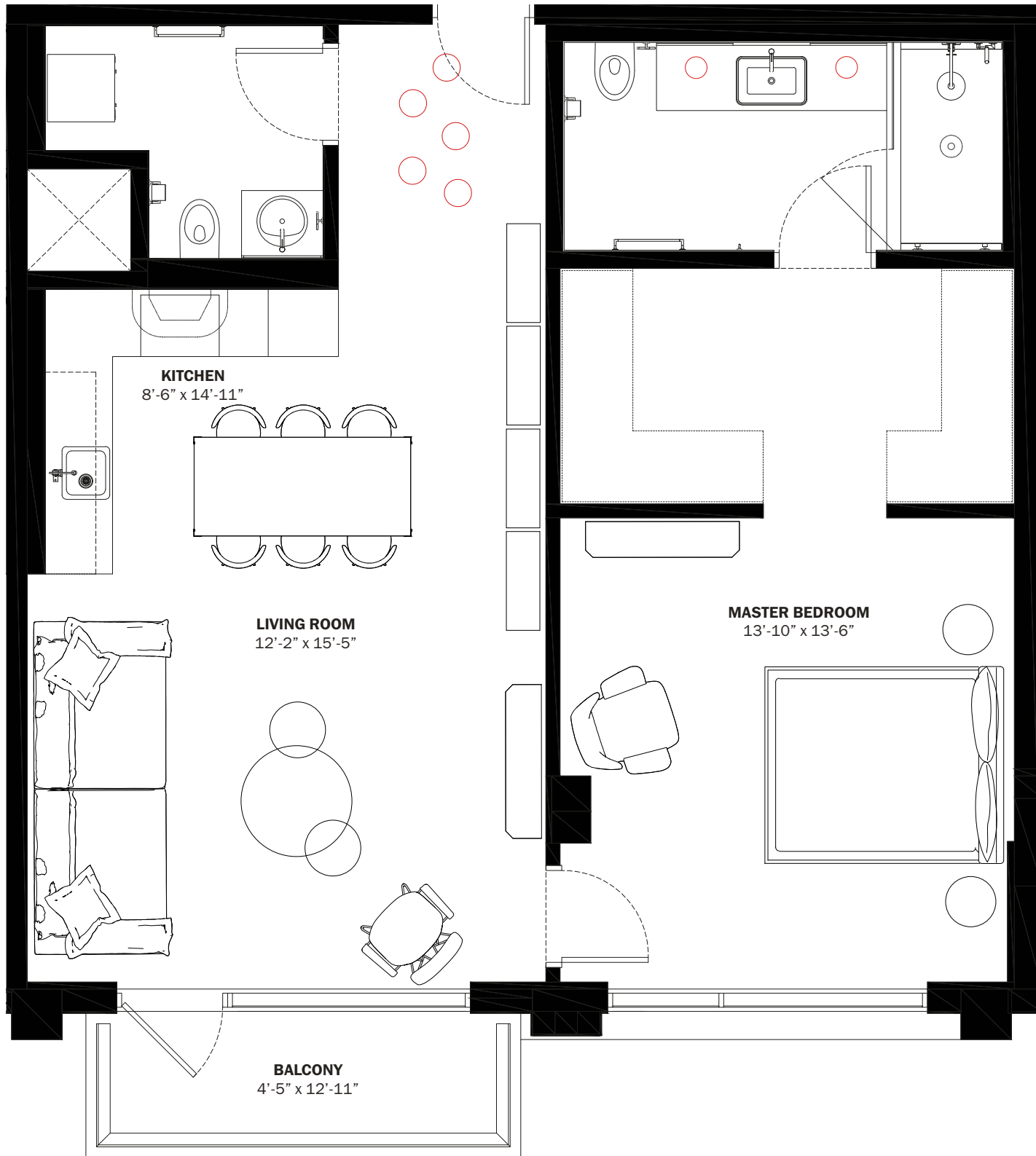


Diesel Wynwood
L Residences
Floor Plans

M

B7

A/C INTERIOR AREA: 888 SQ FT 82.5 M²
 TERRACE AREA: 68 SQ FT 6.4 M²
 TOTAL RESIDENCE: 956 SQ FT 88.9 M²
 FLOORS: 2—7



28th STREET



BELINVEST
CREATING VALUE

ONE | **Sotheby's**
INTERNATIONAL REALTY

DIESEL HEADQUARTERS
VIA DELL'INDUSTRIA 4/6, BREGANZE (VI)
45°41'30.7" N 11°33'41.8" E

DIESEL WYNWOOD CONDOMINIUM
148 NW 28TH ST. MIAMI, FL 33127
25°48'10.0" N 80°11'53.1" W

RR:55
© COPYRIGHT DIESEL - IND 1978

ORAL REPRESENTATIONS CANNOT BE RELIED UPON AS CORRECTLY STATING THE REPRESENTATIONS OF THE DEVELOPER. FOR CORRECT REPRESENTATIONS, MAKE REFERENCE TO THIS BROCHURE AND TO THE DOCUMENTS REQUIRED BY SECTION 718.503, FLORIDA STATUTES, TO BE FURNISHED BY A DEVELOPER TO A BUYER OR LESSEE.

These materials are not intended to be an offer to sell, or solicitation to buy a unit in the condominium. Such an offering shall only be made pursuant to the prospectus (offering circular) for the condominium and no statements should be relied upon unless made in the prospectus or in the applicable purchase agreement. In no event shall any solicitation, offer or sale of a unit in the condominium be made in, or to residents of, any state or country in which such activity would be unlawful. This is not an offer to sell nor a solicitation to purchase a condominium unit directed to any person where such an offer or solicitation is prohibited by law unless the condominium is registered if required or exempt. All prices, plans, specifications, features, amenities and other descriptions are preliminary and are subject to change without notice, as provided in your purchase agreement. Stated square footages and dimensions are measured to the exterior boundaries of the exterior walls and the centerline of interior demising walls and in fact vary from the square footage and dimensions that would be determined by using the description and definition of the "Unit" set forth in the Declaration (which generally only includes the interior airspace between the perimeter walls and excludes all interior structural components and other common elements). This method is generally used in sales materials and is provided to allow a prospective buyer to compare the Units with units in other condominium projects that utilize the same method. Measurements of rooms set forth on this floor plan are generally taken at the farthest points of each given room (as if the room were a perfect rectangle), without regard for any cutouts or variations. Accordingly, the area of the actual room will typically be smaller than the product obtained by multiplying the stated length and width. All dimensions are estimates which will vary with actual construction, and all floor plans, specifications and other development plans are subject to change and will not necessarily accurately reflect the final plans and specifications for the development. All depictions of appliances, counters, soffits, floor coverings and other matters of detail, including, without limitation, items of finish and decoration, are conceptual only and are not necessarily included in each Unit.

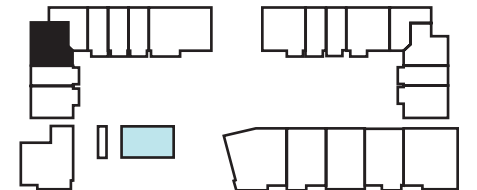
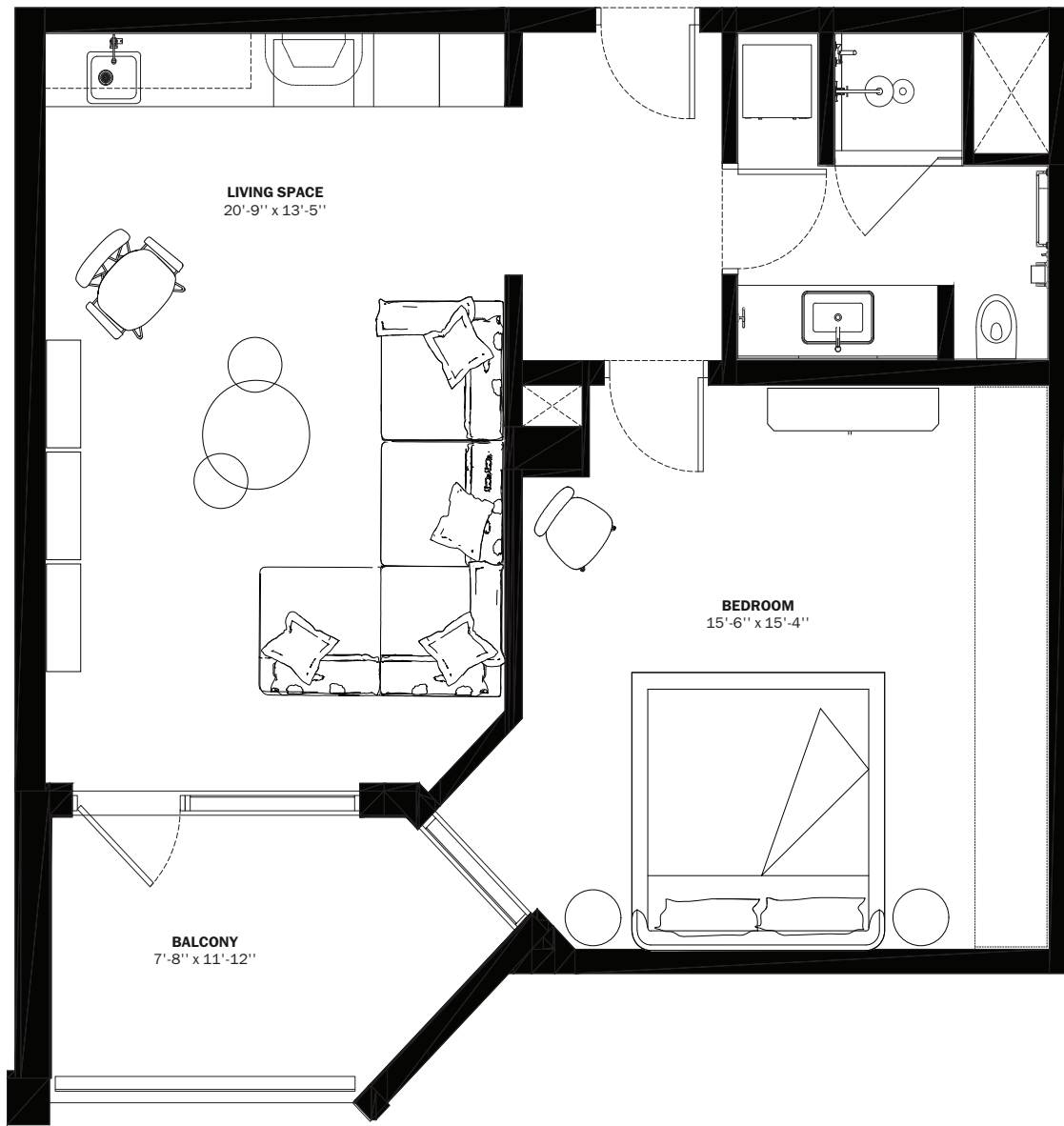
M

Diesel Wynwood
M Residences
Floor Plans

M

B8

INTERIORS AREA: 734 SQ FT 68.2 M²
 TERRACE AREA: 91 SQ FT 8.5 M²
 TOTAL RESIDENCE: 825 SQ FT 76.7 M²
 ID 706 - 7TH LEVEL



28th STREET



BELINVEST
CREATING VALUE

DIESEL HEADQUARTERS
VIA DELL'INDUSTRIA 4/6, BREGANZE (VI)
45°41'30.7" N 11°33'41.8" E

DIESEL WYNWOOD CONDOMINIUM
148 NW 28TH ST. MIAMI, FL 33127
25°48'10.0" N 80°11'53.1" W

RR:55
© COPYRIGHT DIESEL - IND 1978

ORAL REPRESENTATIONS CANNOT BE RELIED UPON AS CORRECTLY STATING THE REPRESENTATIONS OF THE DEVELOPER. FOR CORRECT REPRESENTATIONS, MAKE REFERENCE TO THIS BROCHURE AND TO THE DOCUMENTS REQUIRED BY SECTION 718.503, FLORIDA STATUTES, TO BE FURNISHED BY A DEVELOPER TO A BUYER OR LESSEE.

These materials are not intended to be an offer to sell, or solicitation to buy a unit in the condominium. Such an offering shall only be made pursuant to the prospectus (offering circular) for the condominium and no statements should be relied upon unless made in the prospectus or in the applicable purchase agreement. In no event shall any solicitation, offer or sale of a unit in the condominium be made in, or to residents of, any state or country in which such activity would be unlawful. This is not an offer to sell nor a solicitation to purchase a condominium unit directed to any person where such an offer or solicitation is prohibited by law unless the condominium is registered if required or exempt. All prices, plans, specifications, features, amenities and other descriptions are preliminary and are subject to change without notice, as provided in your purchase agreement. Stated square footages and dimensions are measured to the exterior boundaries of the exterior walls and the centerline of interior demising walls and in fact vary from the square footage and dimensions that would be determined by using the description and definition of the "Unit" set forth in the Declaration (which generally only includes the interior airspace between the perimeter walls and excludes all interior structural components and other common elements). This method is generally used in sales materials and is provided to allow a prospective buyer to compare the Units with units in other condominium projects that utilize the same method. Measurements of rooms set forth on this floor plan are generally taken at the farthest points of each given room (as if the room were a perfect rectangle), without regard for any cutouts or variations. Accordingly, the area of the actual room will typically be smaller than the product obtained by multiplying the stated length and width. All dimensions are estimates which will vary with actual construction, and all floor plans, specifications and other development plans are subject to change and will not necessarily accurately reflect the final plans and specifications for the development. All depictions of appliances, counters, soffits, floor coverings and other matters of detail, including, with out limitation, items of finish and decoration, are conceptual only and are not necessarily included in each Unit.

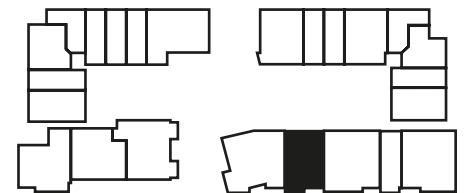
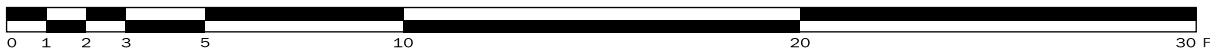
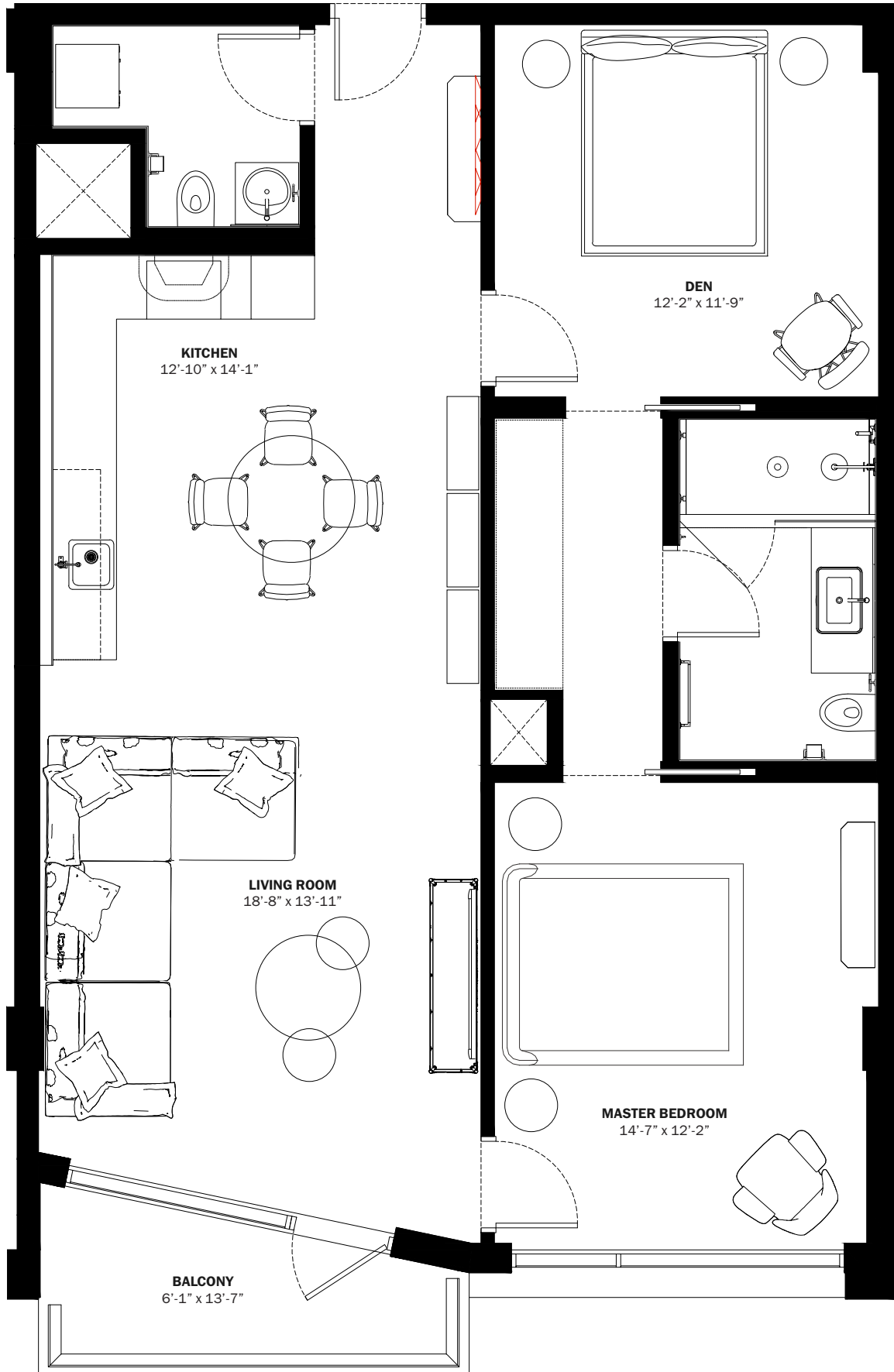
M

Diesel Wynwood
M Residences
Floor Plans

M

C1

A/C INTERIOR AREA: 1,048 SQ FT 97.4 M²
 TERRACE AREA: 76 SQ FT 7.1 M²
 TOTAL RESIDENCE: 1,124 SQ FT 104.5 M²
 FLOORS: 2—6



28th STREET



BELINVEST
CREATING VALUE

ONE | **Sotheby's**
INTERNATIONAL REALTY

DIESEL HEADQUARTERS
VIA DELL'INDUSTRIA 4/6, BREGANZE (VI)
45°41'30.7" N 11°33'41.8" E

DIESEL WYNWOOD CONDOMINIUM
148 NW 28TH ST. MIAMI, FL 33127
25°48'10.0" N 80°11'53.1" W

RR:55
© COPYRIGHT DIESEL - IND 1978

ORAL REPRESENTATIONS CANNOT BE RELIED UPON AS CORRECTLY STATING THE REPRESENTATIONS OF THE DEVELOPER. FOR CORRECT REPRESENTATIONS, MAKE REFERENCE TO THIS BROCHURE AND TO THE DOCUMENTS REQUIRED BY SECTION 718.503, FLORIDA STATUTES, TO BE FURNISHED BY A DEVELOPER TO A BUYER OR LESSEE.

These materials are not intended to be an offer to sell, or solicitation to buy a unit in the condominium. Such an offering shall only be made pursuant to the prospectus (offering circular) for the condominium and no statements should be relied upon unless made in the prospectus or in the applicable purchase agreement. In no event shall any solicitation, offer or sale of a unit in the condominium be made in, or to residents of, any state or country in which such activity would be unlawful. This is not an offer to sell nor a solicitation to purchase a condominium unit directed to any person where such an offer or solicitation is prohibited by law unless the condominium is registered if required or exempt. All prices, plans, specifications, features, amenities and other descriptions are preliminary and are subject to change without notice, as provided in your purchase agreement. Stated square footages and dimensions are measured to the exterior boundaries of the exterior walls and the centerline of interior demising walls and in fact vary from the square footage and dimensions that would be determined by using the description and definition of the "Unit" set forth in the Declaration (which generally only includes the interior airspace between the perimeter walls and excludes all interior structural components and other common elements). This method is generally used in sales materials and is provided to allow a prospective buyer to compare the Units with units in other condominium projects that utilize the same method. Measurements of rooms set forth on this floor plan are generally taken at the farthest points of each given room (as if the room were a perfect rectangle), without regard for any cutouts or variations. Accordingly, the area of the actual room will typically be smaller than the product obtained by multiplying the stated length and width. All dimensions are estimates which will vary with actual construction, and all floor plans, specifications and other development plans are subject to change and will not necessarily accurately reflect the final plans and specifications for the development. All depictions of appliances, counters, soffits, floor coverings and other matters of detail, including, without limitation, items of finish and decoration, are conceptual only and are not necessarily included in each Unit.

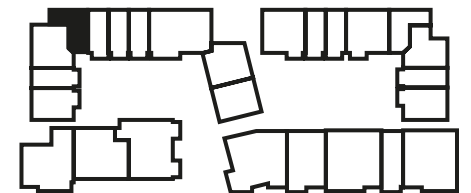
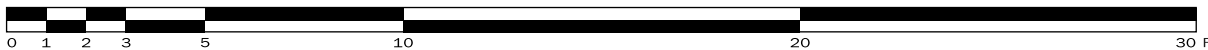
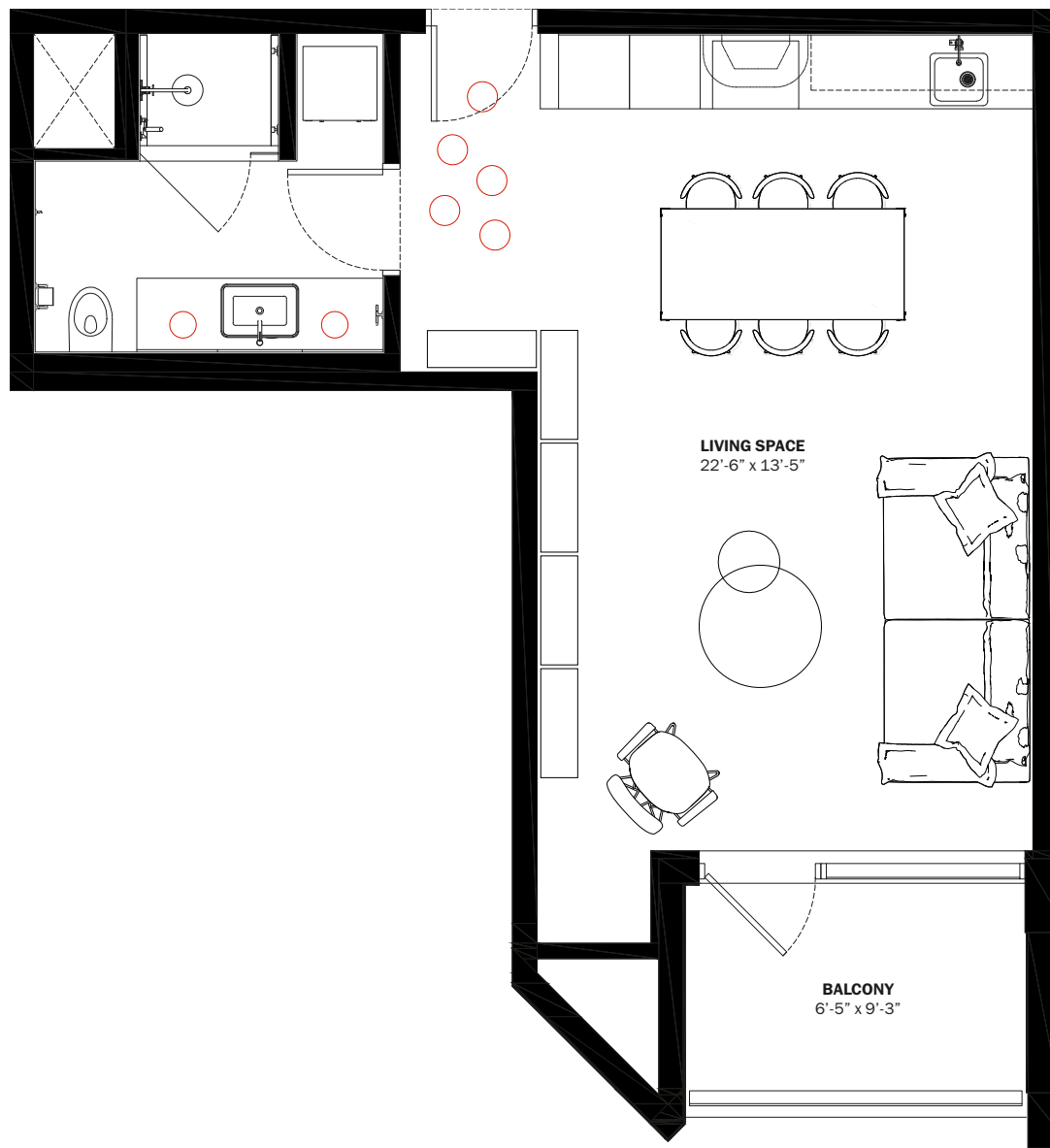
M

Diesel Wynwood
M Residences
Floor Plans

S

D4

A/C INTERIOR AREA: 486 SQ FT 45.2 M²
 TERRACE AREA: 94.5 SQ FT 8.8 M²
 TOTAL RESIDENCE: 580.5 SQ FT 54 M²
 FLOORS: 2—7



28th STREET



BELINVEST
CREATING VALUE

ONE | **Sotheby's**
INTERNATIONAL REALTY

DIESEL HEADQUARTERS
VIA DELL'INDUSTRIA 4/6, BREGANZE (VI)
45°41'30.7" N 11°33'41.8" E

DIESEL WYNWOOD CONDOMINIUM
148 NW 28TH ST. MIAMI, FL 33127
25°48'10.0" N 80°11'53.1" W

RR:55
© COPYRIGHT DIESEL - IND 1978

ORAL REPRESENTATIONS CANNOT BE RELIED UPON AS CORRECTLY STATING THE REPRESENTATIONS OF THE DEVELOPER. FOR CORRECT REPRESENTATIONS, MAKE REFERENCE TO THIS BROCHURE AND TO THE DOCUMENTS REQUIRED BY SECTION 718.503, FLORIDA STATUTES, TO BE FURNISHED BY A DEVELOPER TO A BUYER OR LESSEE. These materials are not intended to be an offer to sell, or solicitation to buy a unit in the condominium. Such an offering shall only be made pursuant to the prospectus (offering circular) for the condominium and no statements should be relied upon unless made in the prospectus or in the applicable purchase agreement. In no event shall any solicitation, offer or sale of a unit in the condominium be made in, or to residents of, any state or country in which such activity would be unlawful. This is not an offer to sell nor a solicitation to purchase a condominium unit directed to any person where such an offer or solicitation is prohibited by law unless the condominium is registered if required or exempt. All prices, plans, specifications, features, amenities and other descriptions are preliminary and are subject to change without notice, as provided in your purchase agreement. Stated square footages and dimensions are measured to the exterior boundaries of the exterior walls and the centerline of interior demising walls and in fact vary from the square footage and dimensions that would be determined by using the description and definition of the "Unit" set forth in the Declaration (which generally only includes the interior airspace between the perimeter walls and excludes all interior structural components and other common elements). This method is generally used in sales materials and is provided to allow a prospective buyer to compare the Units with units in other condominium projects that utilize the same method. Measurements of rooms set forth on this floor plan are generally taken at the farthest points of each given room (as if the room were a perfect rectangle), without regard for any cutouts or variations. Accordingly, the area of the actual room will typically be smaller than the product obtained by multiplying the stated length and width. All dimensions are estimates which will vary with actual construction, and all floor plans, specifications and other development plans are subject to change and will not necessarily accurately reflect the final plans and specifications for the development. All depictions of appliances, counters, soffits, floor coverings and other matters of detail, including, with out limitation, items of finish and decoration, are conceptual only and are not necessarily included in each Unit.

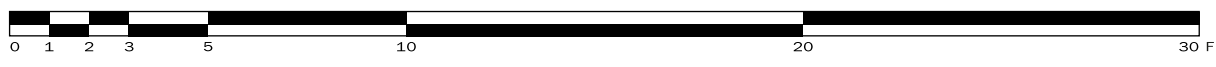
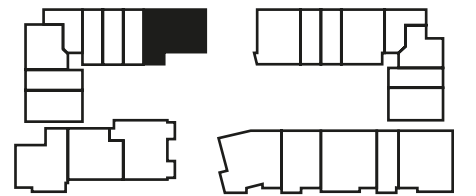
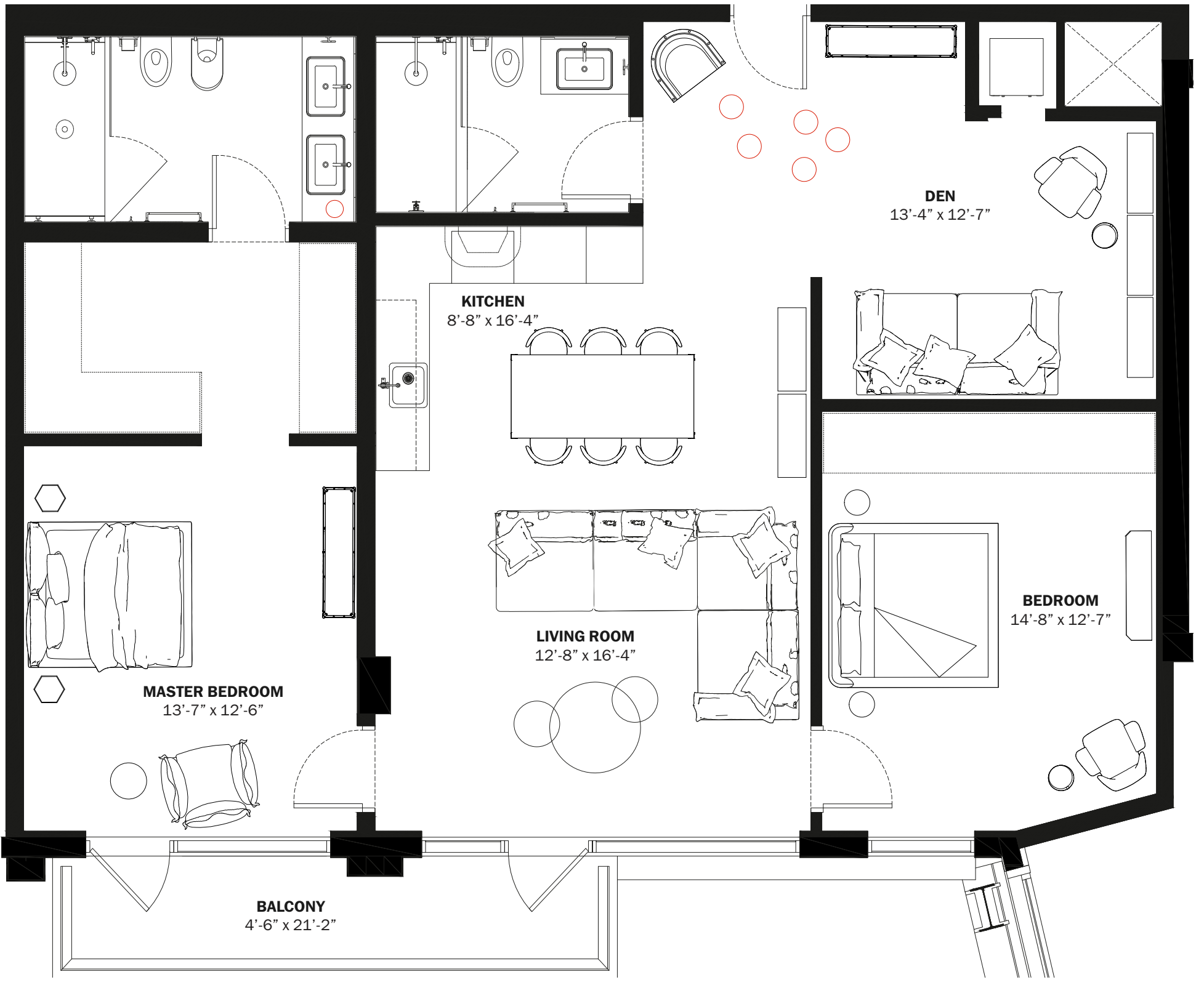
S

Diesel Wynwood
S Residences
Floor Plans

L

E5

A/C INTERIOR AREA: 1,284 SQ FT 119.3 M²
 TERRACE AREA: 122 SQ FT 11.4 M²
 TOTAL RESIDENCE: 1,406 SQ FT 130.7 M²
 FLOORS: 2—7



BELINVEST
CREATING VALUE

ONE | **Sotheby's**
INTERNATIONAL REALTY

DIESEL HEADQUARTERS
VIA DELL'INDUSTRIA 4/6, BREGANZE (VI)
45°41'30.7" N 11°33'41.8" E

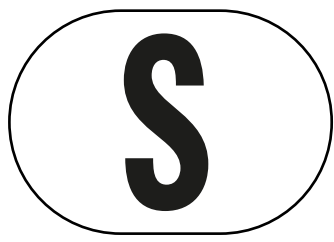
DIESEL WYNWOOD CONDOMINIUM
148 NW 28TH ST. MIAMI, FL 33127
25°48'10.0" N 80°11'53.1" W

RR:55
© COPYRIGHT DIESEL - IND 1978

ORAL REPRESENTATIONS CANNOT BE RELIED UPON AS CORRECTLY STATING THE REPRESENTATIONS OF THE DEVELOPER. FOR CORRECT REPRESENTATIONS, MAKE REFERENCE TO THIS BROCHURE AND TO THE DOCUMENTS REQUIRED BY SECTION 718.503, FLORIDA STATUTES, TO BE FURNISHED BY A DEVELOPER TO A BUYER OR LESSEE. These materials are not intended to be an offer to sell, or solicitation to buy a unit in the condominium. Such an offering shall only be made pursuant to the prospectus (offering circular) for the condominium and no statements should be relied upon unless made in the prospectus or in the applicable purchase agreement. In no event shall any solicitation, offer or sale of a unit in the condominium be made in, or to residents of, any state or country in which such activity would be unlawful. This is not an offer to sell nor a solicitation to purchase a condominium unit directed to any person where such an offer or solicitation is prohibited by law unless the condominium is registered if required or exempt. All prices, plans, specifications, features, amenities and other descriptions are preliminary and are subject to change without notice, as provided in your purchase agreement. Stated square footages and dimensions are measured to the exterior boundaries of the exterior walls and the centerline of interior demising walls and in fact vary from the square footage and dimensions that would be determined by using the description and definition of the "Unit" set forth in the Declaration (which generally only includes the interior airspace between the perimeter walls and excludes all interior structural components and other common elements). This method is generally used in sales materials and is provided to allow a prospective buyer to compare the Units with units in other condominium projects that utilize the same method. Measurements of rooms set forth on this floor plan are generally taken at the farthest points of each given room (as if the room were a perfect rectangle), without regard for any cutouts or variations. Accordingly, the area of the actual room will typically be smaller than the product obtained by multiplying the stated length and width. All dimensions are estimates which will vary with actual construction, and all floor plans, specifications and other development plans are subject to change and will not necessarily accurately reflect the final plans and specifications for the development. All depictions of appliances, counters, soffits, floor coverings and other matters of detail, including, with out limitation, items of finish and decoration, are conceptual only and are not necessarily included in each Unit.

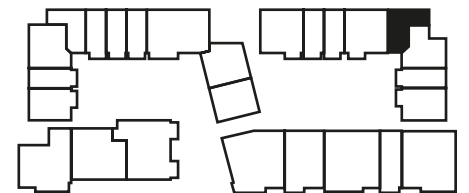
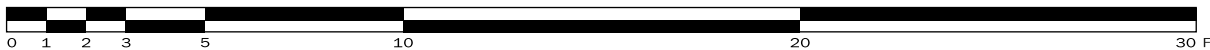
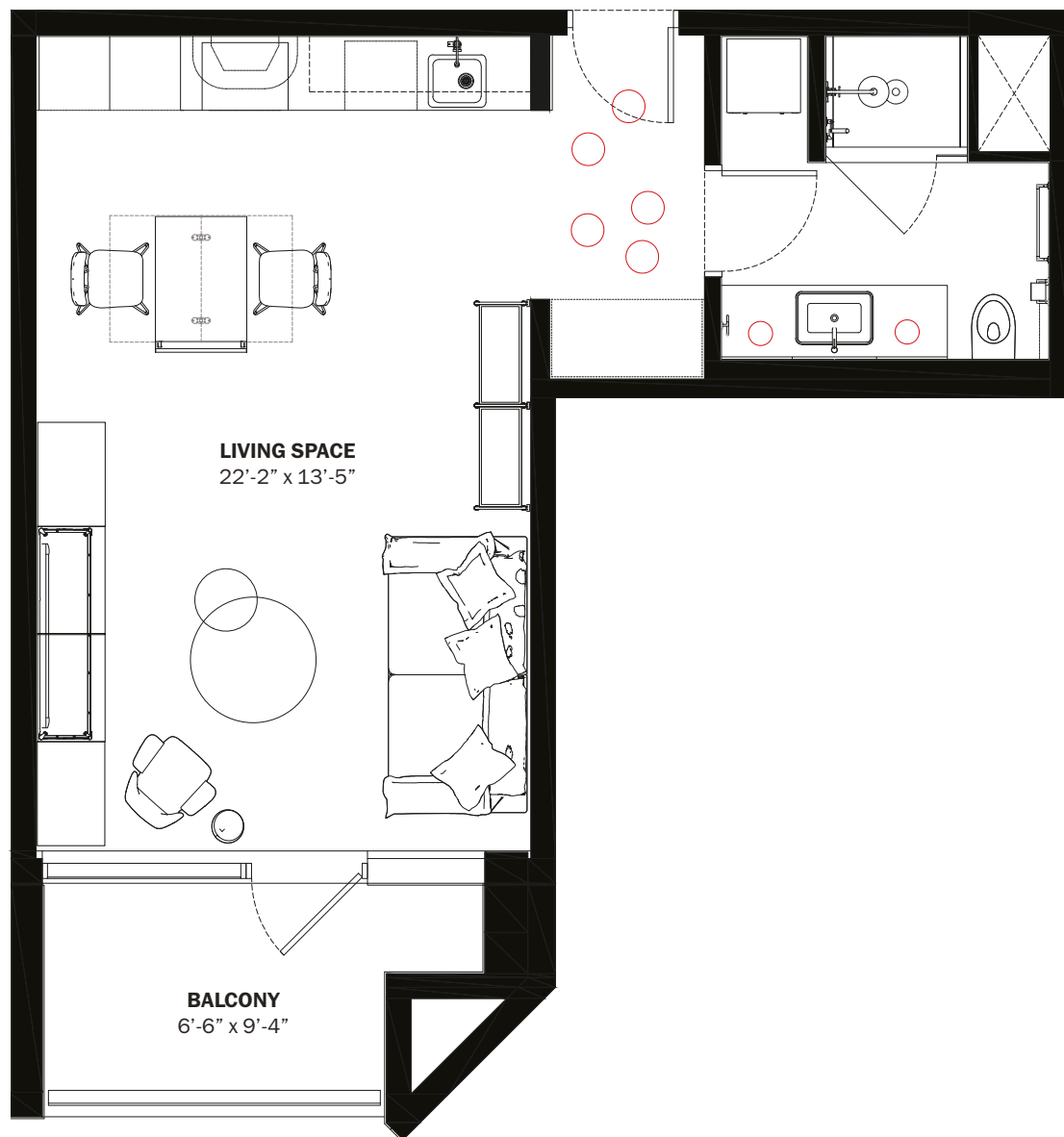


Diesel Wynwood
L Residences
Floor Plans



D6,1

A/C INTERIOR AREA: 470 SQ FT 43.7 M²
 TERRACE AREA: 94.5 SQ FT 8.8 M²
 TOTAL RESIDENCE: 564.5 SQ FT 52.5 M²
 FLOORS: 2—7



28th STREET



BELINVEST
CREATING VALUE

ONE | **Sotheby's**
INTERNATIONAL REALTY

DIESEL HEADQUARTERS
VIA DELL'INDUSTRIA 4/6, BREGANZE (VI)
45°41'30.7" N 11°33'41.8" E

DIESEL WYNWOOD CONDOMINIUM
148 NW 28TH ST. MIAMI, FL 33127
25°48'10.0" N 80°11'53.1" W

RR:55
© COPYRIGHT DIESEL - IND 1978

ORAL REPRESENTATIONS CANNOT BE RELIED UPON AS CORRECTLY STATING THE REPRESENTATIONS OF THE DEVELOPER. FOR CORRECT REPRESENTATIONS, MAKE REFERENCE TO THIS BROCHURE AND TO THE DOCUMENTS REQUIRED BY SECTION 718.503, FLORIDA STATUTES, TO BE FURNISHED BY A DEVELOPER TO A BUYER OR LESSEE.

These materials are not intended to be an offer to sell, or solicitation to buy a unit in the condominium. Such an offering shall only be made pursuant to the prospectus (offering circular) for the condominium and no statements should be relied upon unless made in the prospectus or in the applicable purchase agreement. In no event shall any solicitation, offer or sale of a unit in the condominium be made in, or to residents of, any state or country in which such activity would be unlawful. This is not an offer to sell nor a solicitation to purchase a condominium unit directed to any person where such an offer or solicitation is prohibited by law unless the condominium is registered if required or exempt. All prices, plans, specifications, features, amenities and other descriptions are preliminary and are subject to change without notice, as provided in your purchase agreement. Stated square footages and dimensions are measured to the exterior boundaries of the exterior walls and the centerline of interior demising walls and in fact vary from the square footage and dimensions that would be determined by using the description and definition of the "Unit" set forth in the Declaration (which generally only includes the interior airspace between the perimeter walls and excludes all interior structural components and other common elements). This method is generally used in sales materials and is provided to allow a prospective buyer to compare the Units with units in other condominium projects that utilize the same method. Measurements of rooms set forth on this floor plan are generally taken at the farthest points of each given room (as if the room were a perfect rectangle), without regard for any cutouts or variations. Accordingly, the area of the actual room will typically be smaller than the product obtained by multiplying the stated length and width. All dimensions are estimates which will vary with actual construction, and all floor plans, specifications and other development plans are subject to change and will not necessarily accurately reflect the final plans and specifications for the development. All depictions of appliances, counters, soffits, floor coverings and other matters of detail, including, with out limitation, items of finish and decoration, are conceptual only and are not necessarily included in each Unit.

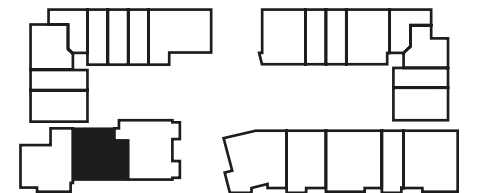
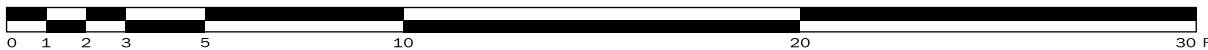
S

Diesel Wynwood
S Residences
Floor Plans

L

E2

A/C INTERIOR AREA: 1,193 SQ FT 110.9 M²
 TERRACE AREA: - -
 TOTAL RESIDENCE: 1,193 SQ FT 110.9 M²
 FLOORS: 2—5



28th STREET



BELINVEST
CREATING VALUE

ONE | **Sotheby's**
INTERNATIONAL REALTY

DIESEL HEADQUARTERS
VIA DELL'INDUSTRIA 4/6, BREGANZE (VI)
45°41'30.7" N 11°33'41.8" E

DIESEL WYNWOOD CONDOMINIUM
148 NW 28TH ST. MIAMI, FL 33127
25°48'10.0" N 80°11'53.1" W

RR:55
© COPYRIGHT DIESEL - IND 1978

ORAL REPRESENTATIONS CANNOT BE RELIED UPON AS CORRECTLY STATING THE REPRESENTATIONS OF THE DEVELOPER. FOR CORRECT REPRESENTATIONS, MAKE REFERENCE TO THIS BROCHURE AND TO THE DOCUMENTS REQUIRED BY SECTION 718.503, FLORIDA STATUTES, TO BE FURNISHED BY A DEVELOPER TO A BUYER OR LESSEE. These materials are not intended to be an offer to sell, or solicitation to buy a unit in the condominium. Such an offering shall only be made pursuant to the prospectus (offering circular) for the condominium and no statements should be relied upon unless made in the prospectus or in the applicable purchase agreement. In no event shall any solicitation, offer or sale of a unit in the condominium be made in, or to residents of, any state or country in which such activity would be unlawful. This is not an offer to sell nor a solicitation to purchase a condominium unit directed to any person where such an offer or solicitation is prohibited by law unless the condominium is registered if required or exempt. All prices, plans, specifications, features, amenities and other descriptions are preliminary and are subject to change without notice, as provided in your purchase agreement. Stated square footages and dimensions are measured to the exterior boundaries of the exterior walls and the centerline of interior demising walls and in fact vary from the square footage and dimensions that would be determined by using the description and definition of the "Unit" set forth in the Declaration (which generally only includes the interior airspace between the perimeter walls and excludes all interior structural components and other common elements). This method is generally used in sales materials and is provided to allow a prospective buyer to compare the Units with units in other condominium projects that utilize the same method. Measurements of rooms set forth on this floor plan are generally taken at the farthest points of each given room (as if the room were a perfect rectangle), without regard for any cutouts or variations. Accordingly, the area of the actual room will typically be smaller than the product obtained by multiplying the stated length and width. All dimensions are estimates which will vary with actual construction, and all floor plans, specifications and other development plans are subject to change and will not necessarily accurately reflect the final plans and specifications for the development. All depictions of appliances, counters, soffits, floor coverings and other matters of detail, including, without limitation, items of finish and decoration, are conceptual only and are not necessarily included in each Unit.



Diesel Wynwood
L Residences
Floor Plans