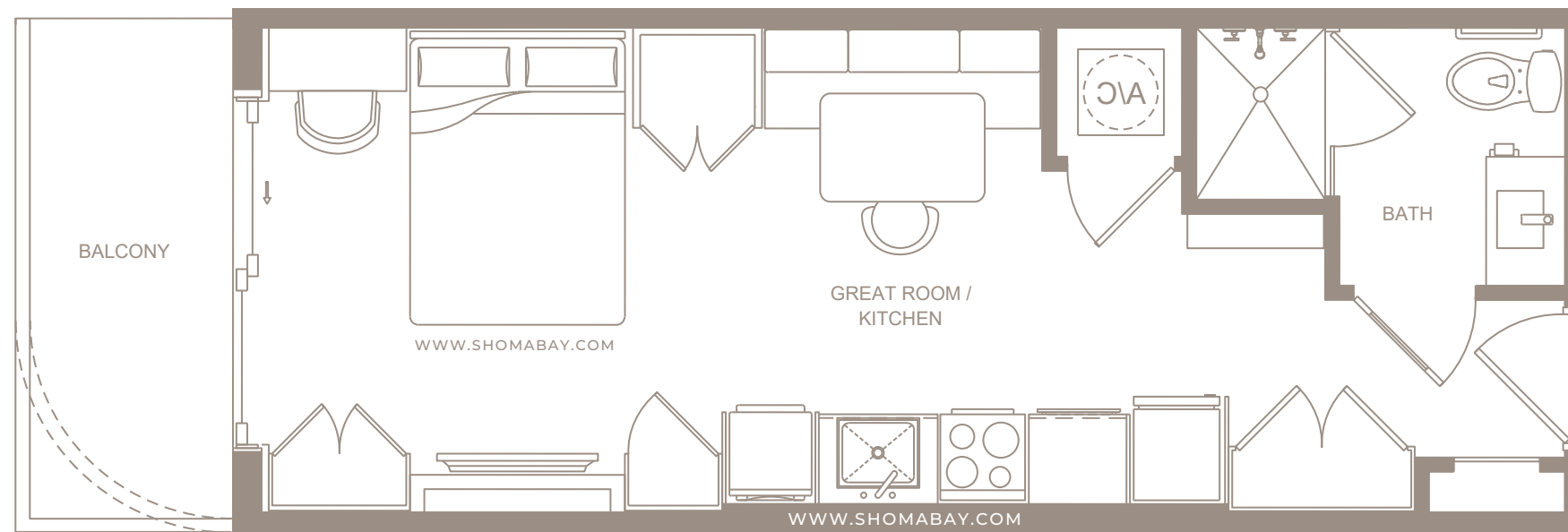


- STUDIO
- 1 BEDROOMS
- 2 BEDROOMS
- 3 BEDROOMS

Exclusive Sales & Marketing by **ISGWORLD®**

**OVERALL LEVEL 8 - PLAN**  
 17 UNITS  
 SCALE: 1/20" = 1'-0"  
 NORTH

All plans, features and amenities depicted herein are based upon preliminary development plans and are subject to change without notice in the manner provided in the offering documents by the developer. No guarantees or representations whatsoever are made that any plans, features, amenities or facilities will be provided or, if provided, will be of the same type, size, location or nature as depicted or described herein. The sketches, renderings, graphic materials, plans, specifications, terms, conditions and statements contained are proposed only. We reserve the right to modify, revise or withdraw any or all of same in our sole discretion and without prior notice.

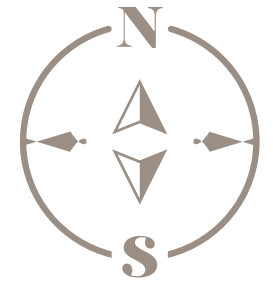


SHOMA - Exclusive Sales & Marketing by **ISGWORLD®**

**STUDIO**

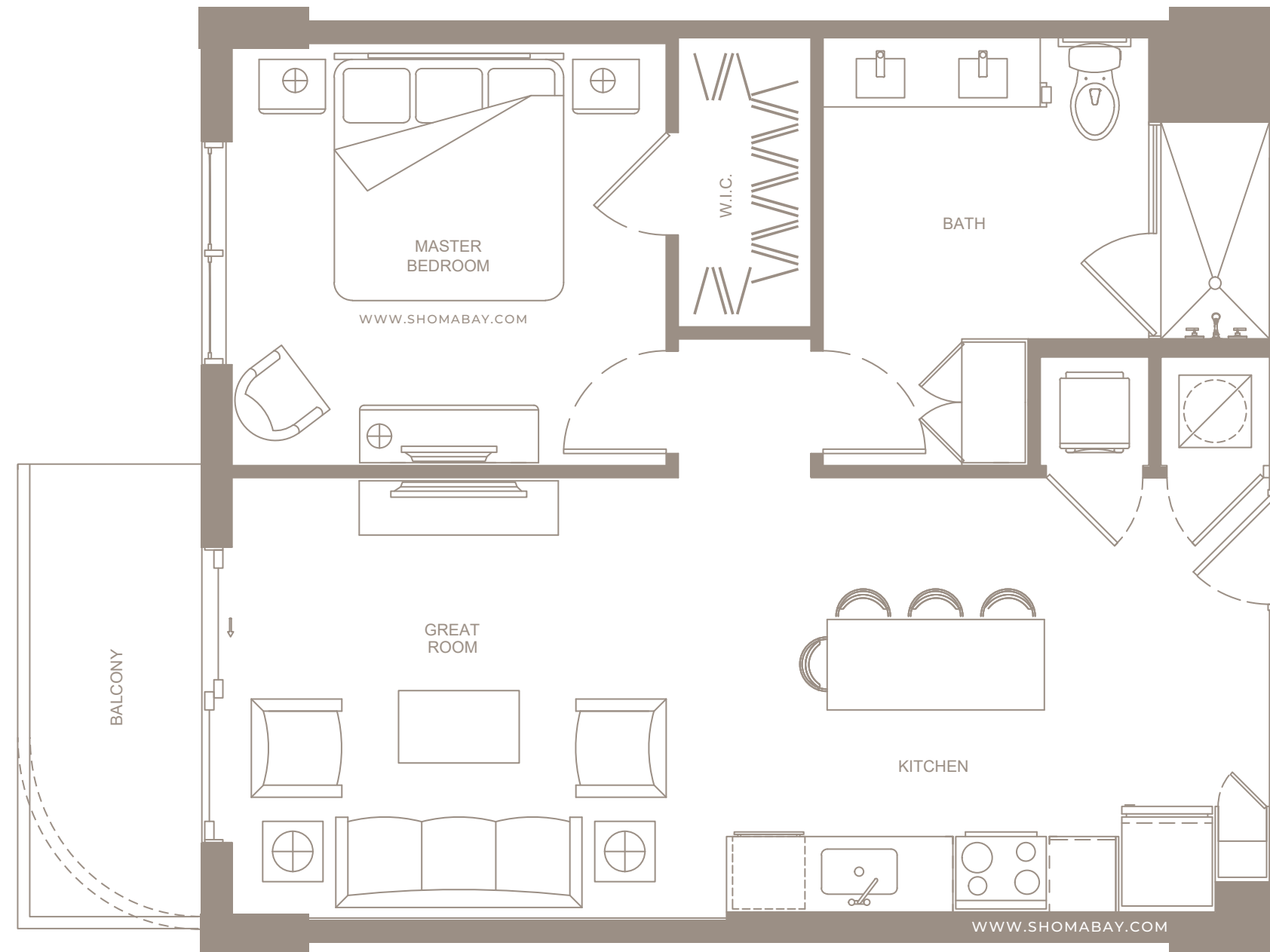
INTERIOR: 346 SQ.FT (32.1 m<sup>2</sup>)  
EXTERIOR: 50 SQ.FT (4.6 m<sup>2</sup>)

Any renderings and depictions are conceptual only and are for the convenience of reference. They should not be relied upon as representations, express or implied, of the final detail of the Units nor the views from any of the Units. ORAL REPRESENTATIONS CANNOT BE RELIED UPON AS CORRECTLY STATING REPRESENTATIONS OF THE DEVELOPER. FOR CORRECT REPRESENTATIONS, MAKE REFERENCE TO THIS BROCHURE AND TO THE DOCUMENTS REQUIRED BY 718.503, FLORIDA STATUTES, TO BE FURNISHED BY A DEVELOPER TO A BUYER OR LESSEE.



NORTH LINE KEY: (02 / 03)

SOUTH LINE KEY: (07 / 08)



**UNIT A1** (1BD / 1BTH)

INTERIOR: 697 SQ.FT (64.7 m<sup>2</sup>)

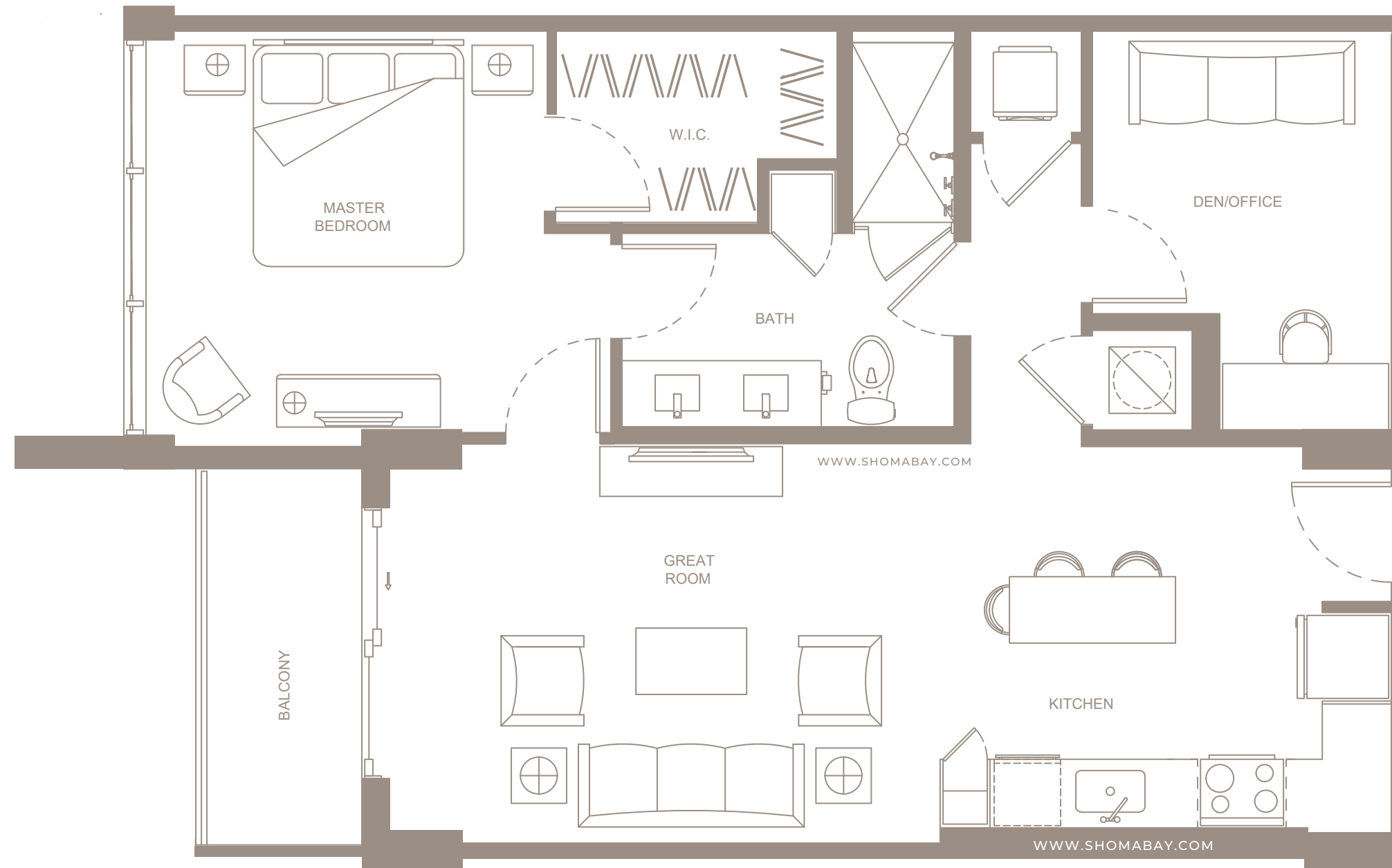
EXTERIOR: 59 SQ.FT (5.4 m<sup>2</sup>)

SHOMA - Exclusive Sales & Marketing by **ISGWORLD**<sup>®</sup>

Any renderings and depictions are conceptual only and are for the convenience of reference. They should not be relied upon as representations, express or implied, of the final detail of the Units nor the views from any of the Units. ORAL REPRESENTATIONS CANNOT BE RELIED UPON AS CORRECTLY STATING REPRESENTATIONS OF THE DEVELOPER. FOR CORRECT REPRESENTATIONS, MAKE REFERENCE TO THIS BROCHURE AND TO THE DOCUMENTS REQUIRED BY 718.503, FLORIDA STATUTES, TO BE FURNISHED BY A DEVELOPER TO A BUYER OR LESSEE.



NORTH LINE KEY: (16 / 17)



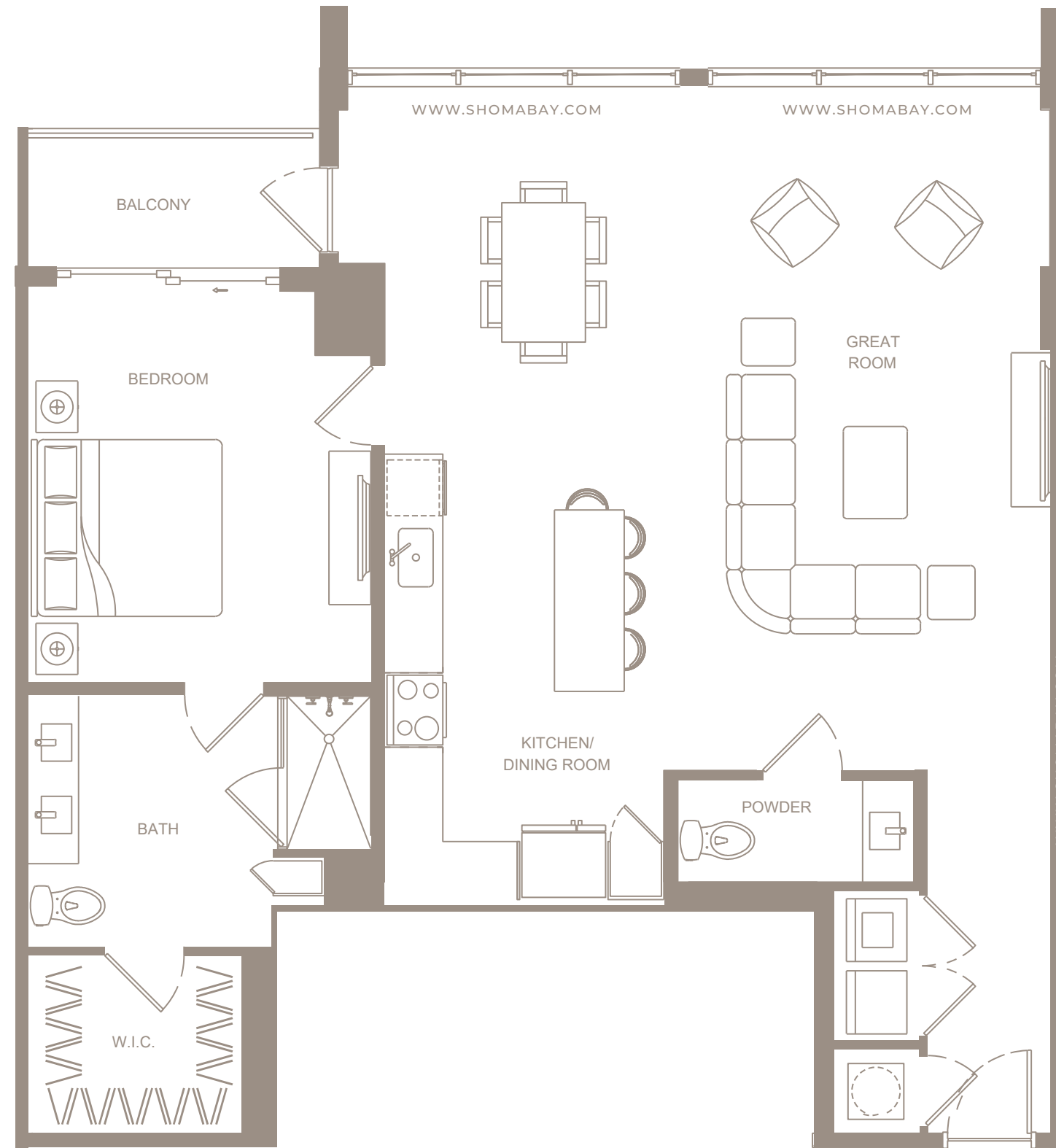
**UNIT A2** (1BD / DEN / 1BTH)

INTERIOR: 816 SQ.FT (75.8 m<sup>2</sup>)

EXTERIOR: 52 SQ.FT (4.8 m<sup>2</sup>)

SHOMA - Exclusive Sales & Marketing by **ISGWORLD**<sup>®</sup>

Any renderings and depictions are conceptual only and are for the convenience of reference. They should not be relied upon as representations, express or implied, of the final detail of the Units nor the views from any of the Units. ORAL REPRESENTATIONS CANNOT BE RELIED UPON AS CORRECTLY STATING REPRESENTATIONS OF THE DEVELOPER. FOR CORRECT REPRESENTATIONS, MAKE REFERENCE TO THIS BROCHURE AND TO THE DOCUMENTS REQUIRED BY 718.503, FLORIDA STATUTES, TO BE FURNISHED BY A DEVELOPER TO A BUYER OR LESSEE.



NORTH LINE KEY: (01)

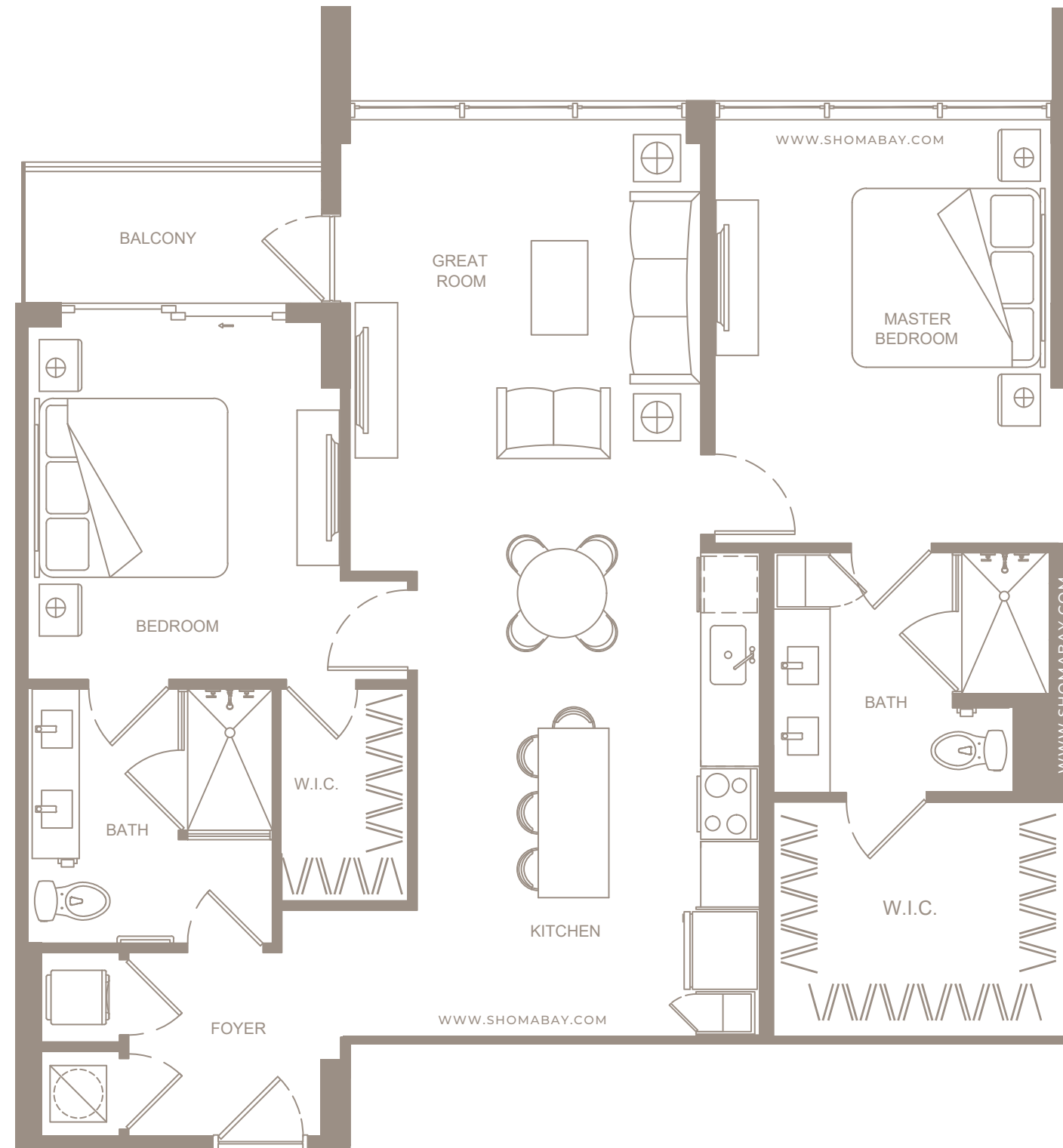
SHOMA - Exclusive Sales & Marketing by **ISGWORLD**

**UNIT A3** (1BD / 1.5BTH)

INTERIOR: 1,097 SQ.FT (101.9 m<sup>2</sup>)

EXTERIOR: 49 SQ.FT (4.5 m<sup>2</sup>)

Any renderings and depictions are conceptual only and are for the convenience of reference. They should not be relied upon as representations, express or implied, of the final detail of the Units nor the views from any of the Units. ORAL REPRESENTATIONS CANNOT BE RELIED UPON AS CORRECTLY STATING REPRESENTATIONS OF THE DEVELOPER. FOR CORRECT REPRESENTATIONS, MAKE REFERENCE TO THIS BROCHURE AND TO THE DOCUMENTS REQUIRED BY 718.503, FLORIDA STATUTES, TO BE FURNISHED BY A DEVELOPER TO A BUYER OR LESSEE.



**SOUTH LINE KEY: (9)**

SHOMA - Exclusive Sales & Marketing by **ISGWORLD®**

**UNIT B4 (2BD / 2BTH)**

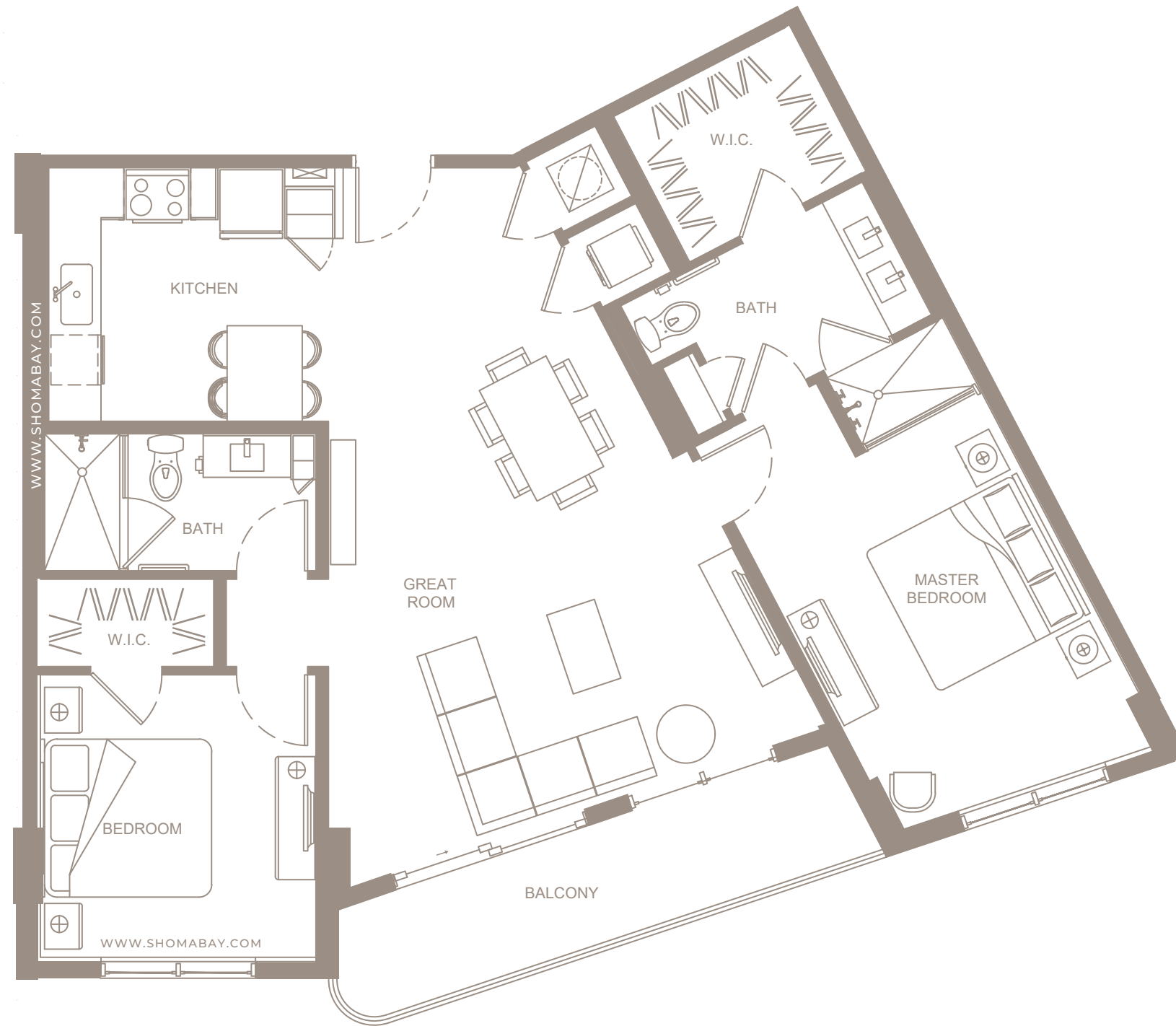
INTERIOR: 1,138 SQ.FT (105.7 m<sup>2</sup>)

EXTERIOR: 49 SQ.FT (4.5 m<sup>2</sup>)

Any renderings and depictions are conceptual only and are for the convenience of reference. They should not be relied upon as representations, express or implied, of the final detail of the Units nor the views from any of the Units. ORAL REPRESENTATIONS CANNOT BE RELIED UPON AS CORRECTLY STATING REPRESENTATIONS OF THE DEVELOPER. FOR CORRECT REPRESENTATIONS, MAKE REFERENCE TO THIS BROCHURE AND TO THE DOCUMENTS REQUIRED BY 718.503, FLORIDA STATUTES, TO BE FURNISHED BY A DEVELOPER TO A BUYER OR LESSEE.



SOUTH LINE KEY: (05)



SHOMA - Exclusive Sales & Marketing by **ISGWORLD**<sup>®</sup>

**UNIT B3** (2BD / 2BTH)  
 INTERIOR: 1,119 SQ.FT (103.9 m<sup>2</sup>)  
 EXTERIOR: 100 SQ.FT (9.2 m<sup>2</sup>)

Any renderings and depictions are conceptual only and are for the convenience of reference. They should not be relied upon as representations, express or implied, of the final detail of the Units nor the views from any of the Units. ORAL REPRESENTATIONS CANNOT BE RELIED UPON AS CORRECTLY STATING REPRESENTATIONS OF THE DEVELOPER. FOR CORRECT REPRESENTATIONS, MAKE REFERENCE TO THIS BROCHURE AND TO THE DOCUMENTS REQUIRED BY 718.503, FLORIDA STATUTES, TO BE FURNISHED BY A DEVELOPER TO A BUYER OR LESSEE.



SOUTH LINE KEY: (10)

SHOMA - Exclusive Sales & Marketing by **ISGWORLD**

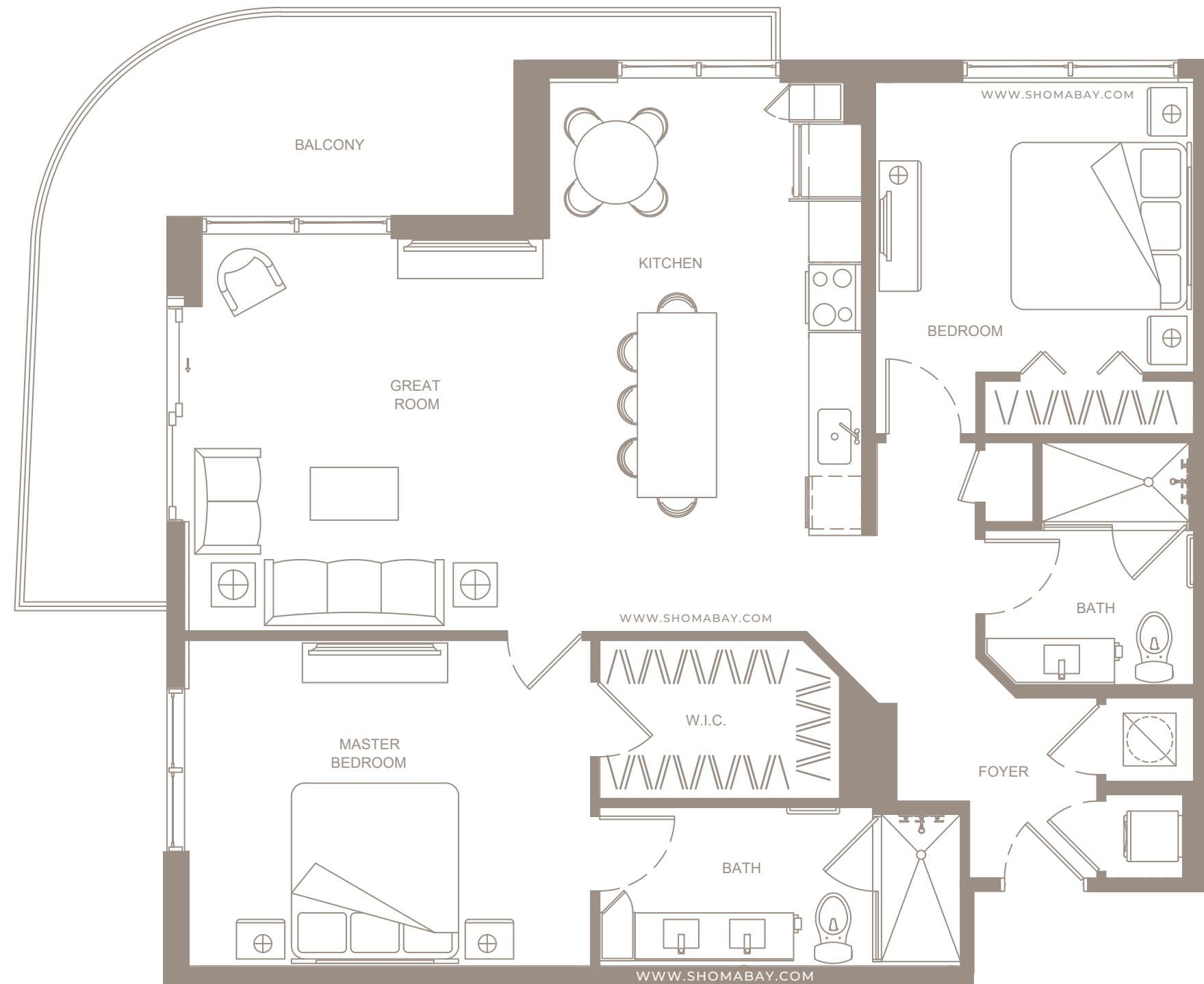
**UNIT B2** (2BD / 2BTH)  
INTERIOR: 1,110 SQ.FT (103.0 m<sup>2</sup>)  
EXTERIOR: 49 SQ.FT (4.5 m<sup>2</sup>)

Any renderings and depictions are conceptual only and are for the convenience of reference. They should not be relied upon as representations, express or implied, of the final detail of the Units nor the views from any of the Units. ORAL REPRESENTATIONS CANNOT BE RELIED UPON AS CORRECTLY STATING REPRESENTATIONS OF THE DEVELOPER. FOR CORRECT REPRESENTATIONS, MAKE REFERENCE TO THIS BROCHURE AND TO THE DOCUMENTS REQUIRED BY 718.503, FLORIDA STATUTES, TO BE FURNISHED BY A DEVELOPER TO A BUYER OR LESSEE.





NORTH WEST LINE KEY: (13)



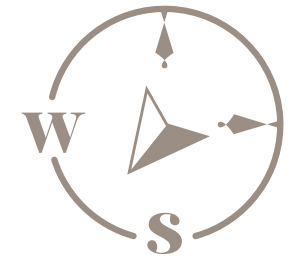
SHOMA - Exclusive Sales & Marketing by **ISGWORLD**<sup>®</sup>

**UNIT B5** (2BD / 2BTH)

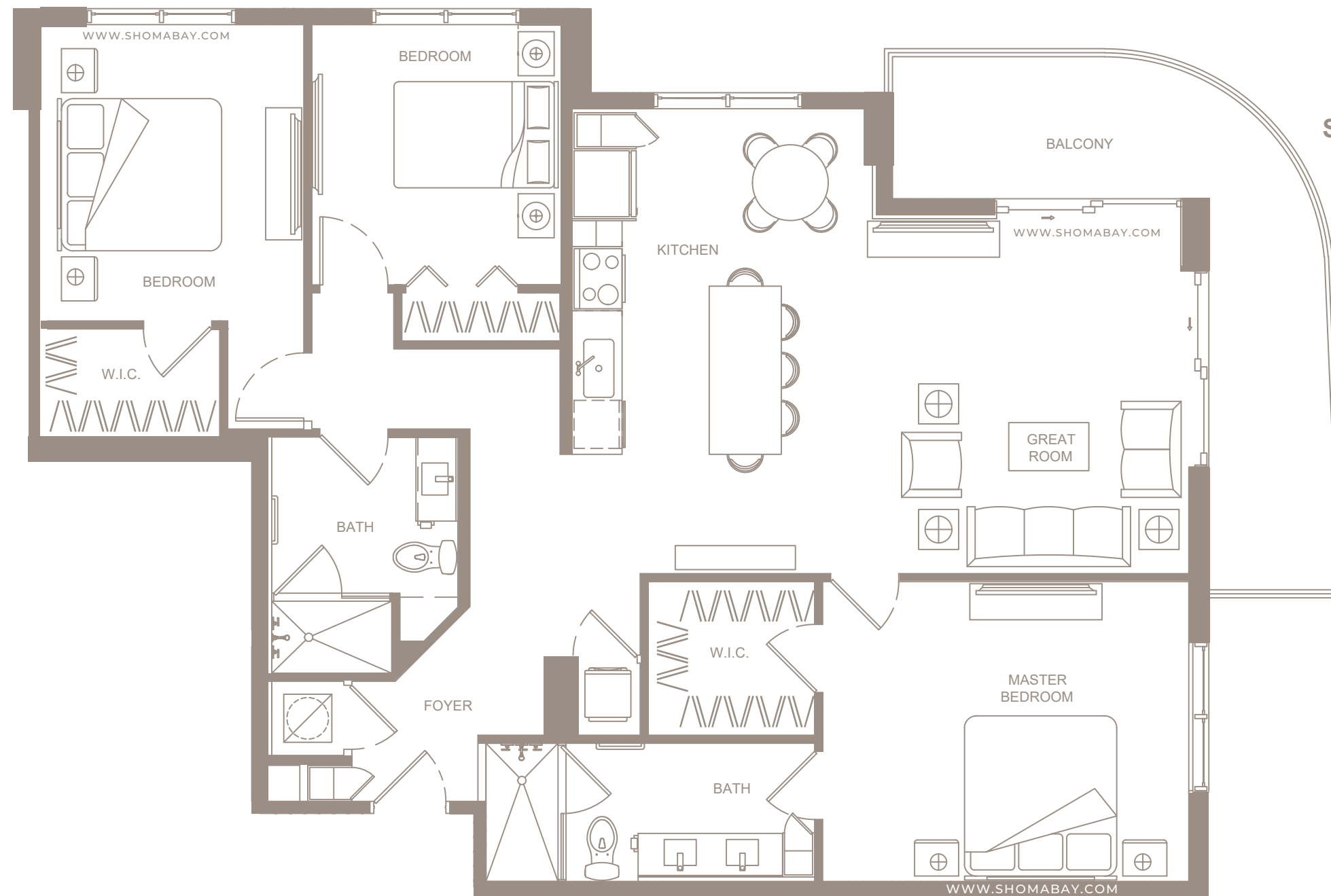
INTERIOR: 1,182 SQ.FT (109.8 m<sup>2</sup>)

EXTERIOR: 210 SQ.FT (19.5 m<sup>2</sup>)

Any renderings and depictions are conceptual only and are for the convenience of reference. They should not be relied upon as representations, express or implied, of the final detail of the Units nor the views from any of the Units. ORAL REPRESENTATIONS CANNOT BE RELIED UPON AS CORRECTLY STATING REPRESENTATIONS OF THE DEVELOPER. FOR CORRECT REPRESENTATIONS, MAKE REFERENCE TO THIS BROCHURE AND TO THE DOCUMENTS REQUIRED BY 718.503, FLORIDA STATUTES, TO BE FURNISHED BY A DEVELOPER TO A BUYER OR LESSEE.



SOUTH WEST LINE KEY: (12)



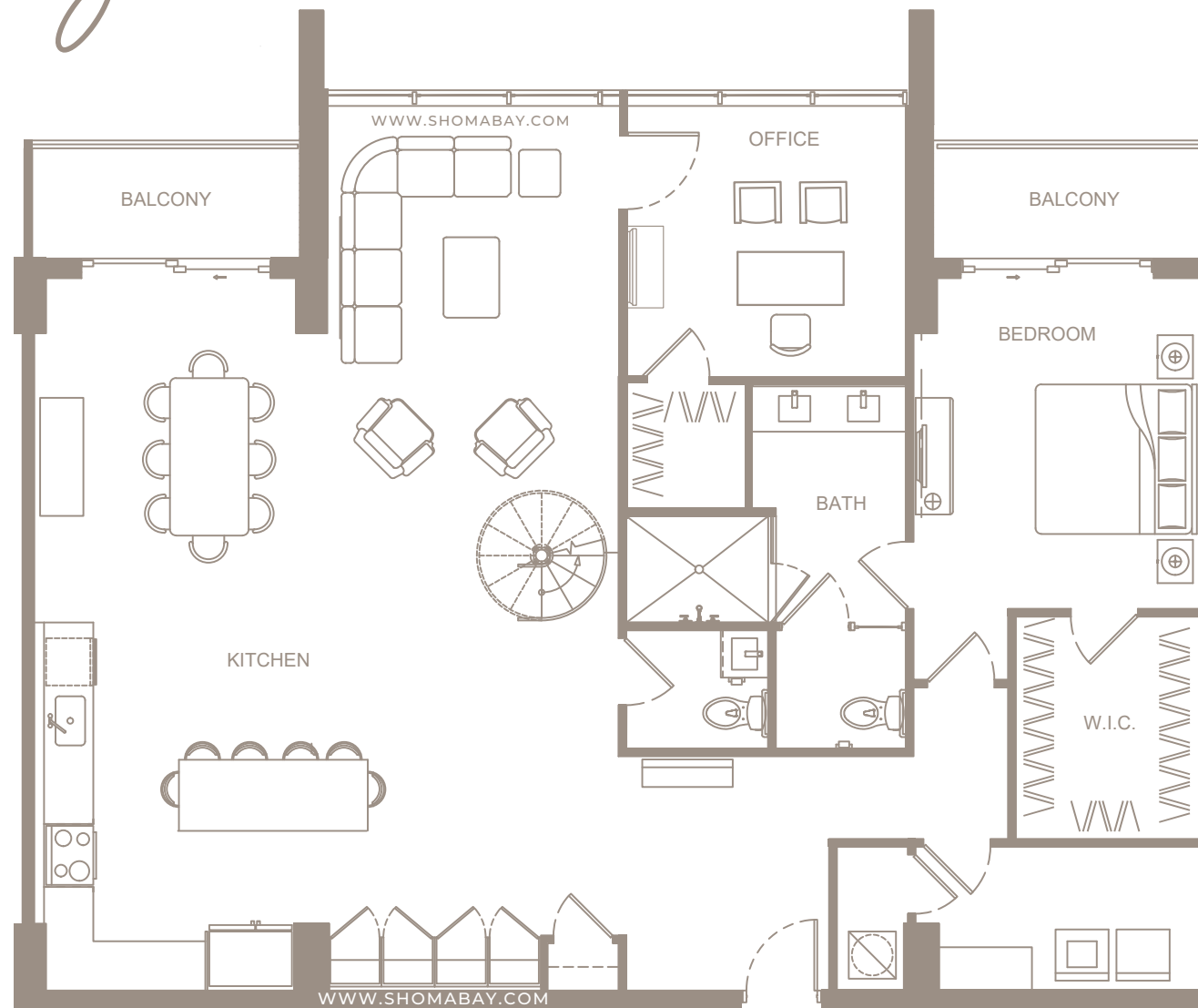
SHOMA - Exclusive Sales & Marketing by **ISGWORLD®**

**UNIT C1** (3BD / 2BTH)

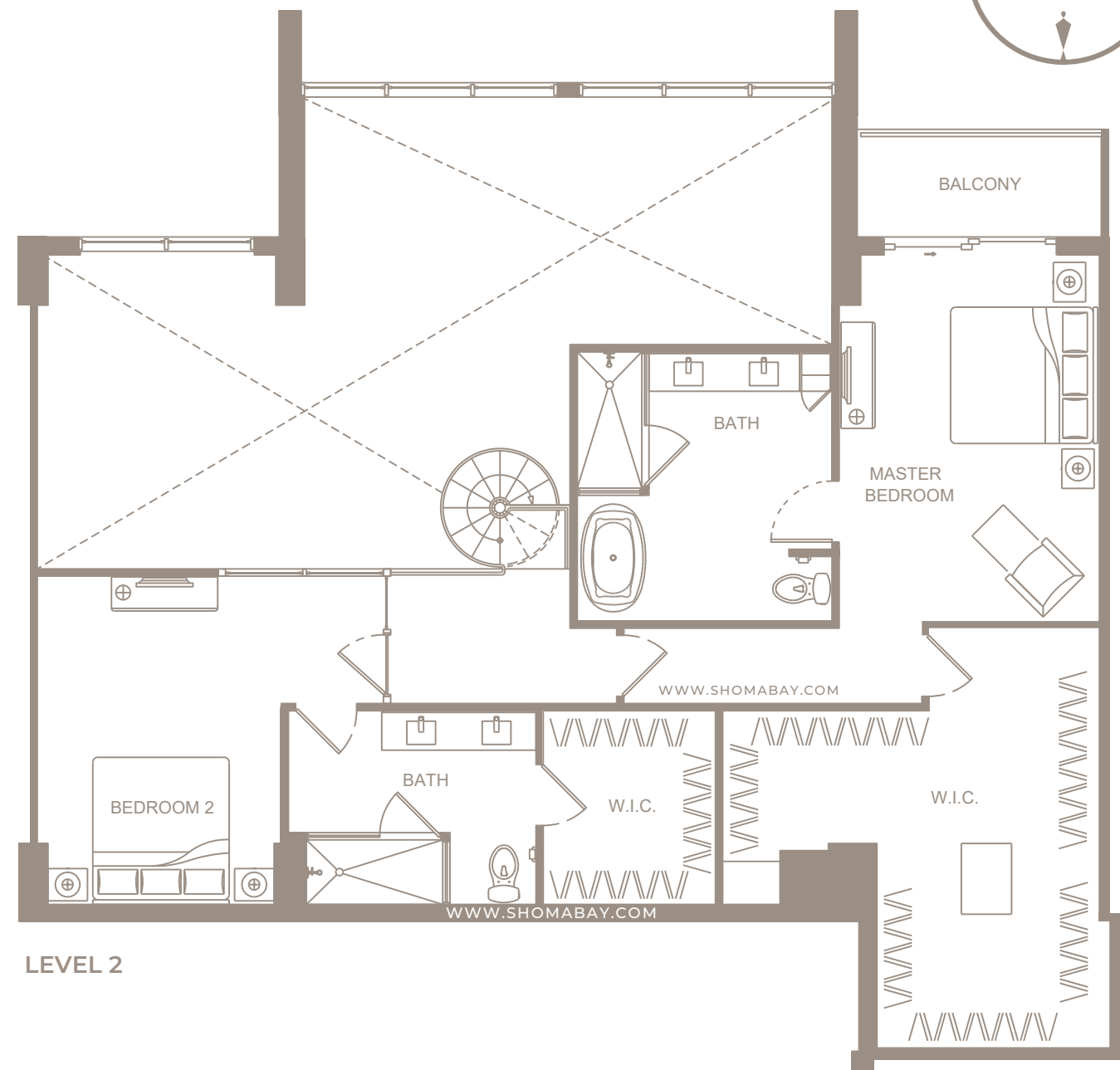
INTERIOR: 1,349 SQ.FT (125.3 m<sup>2</sup>)

EXTERIOR: 171 SQ.FT (15.8 m<sup>2</sup>)

Any renderings and depictions are conceptual only and are for the convenience of reference. They should not be relied upon as representations, express or implied, of the final detail of the Units nor the views from any of the Units. ORAL REPRESENTATIONS CANNOT BE RELIED UPON AS CORRECTLY STATING REPRESENTATIONS OF THE DEVELOPER. FOR CORRECT REPRESENTATIONS, MAKE REFERENCE TO THIS BROCHURE AND TO THE DOCUMENTS REQUIRED BY 718.503, FLORIDA STATUTES, TO BE FURNISHED BY A DEVELOPER TO A BUYER OR LESSEE.



LEVEL 1



LEVEL 2

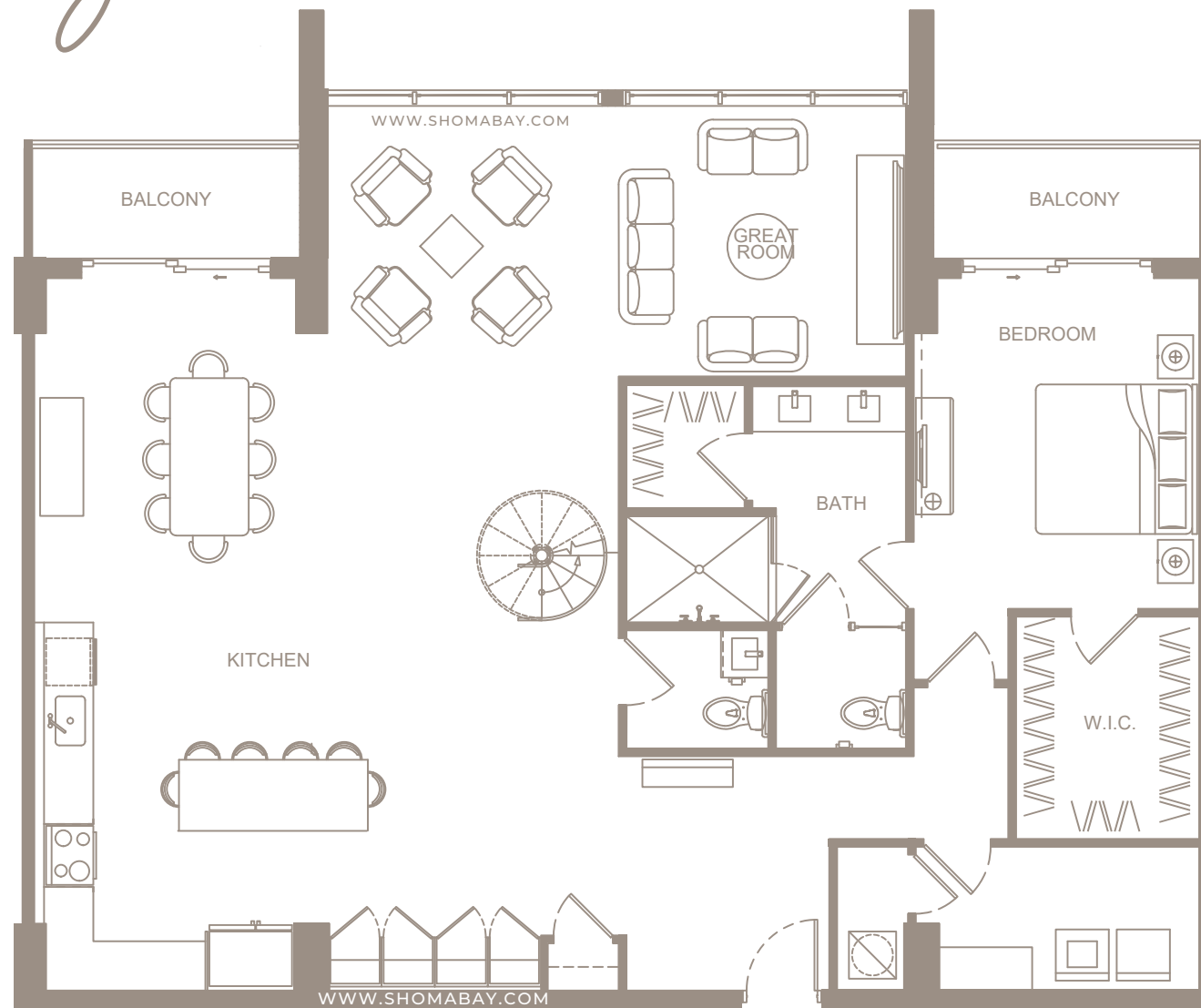
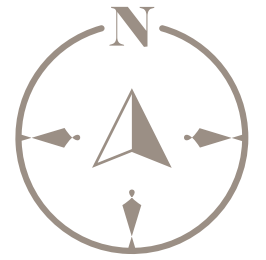
**UNIT P6 - PENTHOUSE (3BD / 3.5BTH)**

INTERIOR: 2,763 SQ.FT (256.6 m<sup>2</sup>)

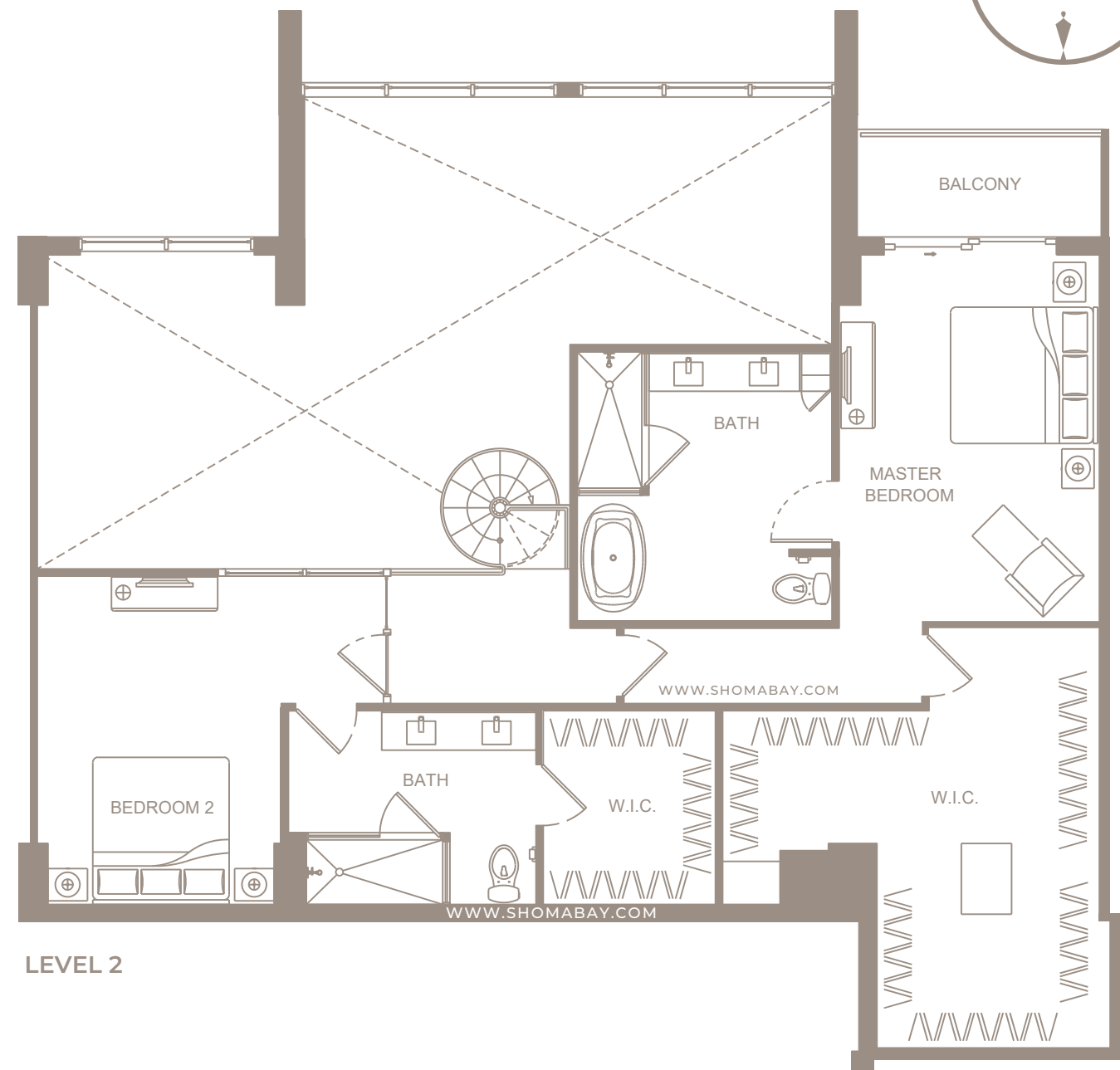
EXTERIOR: 158 SQ.FT (14.7 m<sup>2</sup>)

SHOMA - Exclusive Sales & Marketing by **ISGWORLD®**

Any renderings and depictions are conceptual only and are for the convenience of reference. They should not be relied upon as representations, express or implied, of the final detail of the Units nor the views from any of the Units. ORAL REPRESENTATIONS CANNOT BE RELIED UPON AS CORRECTLY STATING REPRESENTATIONS OF THE DEVELOPER. FOR CORRECT REPRESENTATIONS, MAKE REFERENCE TO THIS BROCHURE AND TO THE DOCUMENTS REQUIRED BY 718.503, FLORIDA STATUTES, TO BE FURNISHED BY A DEVELOPER TO A BUYER OR LESSEE.



LEVEL 1



LEVEL 2

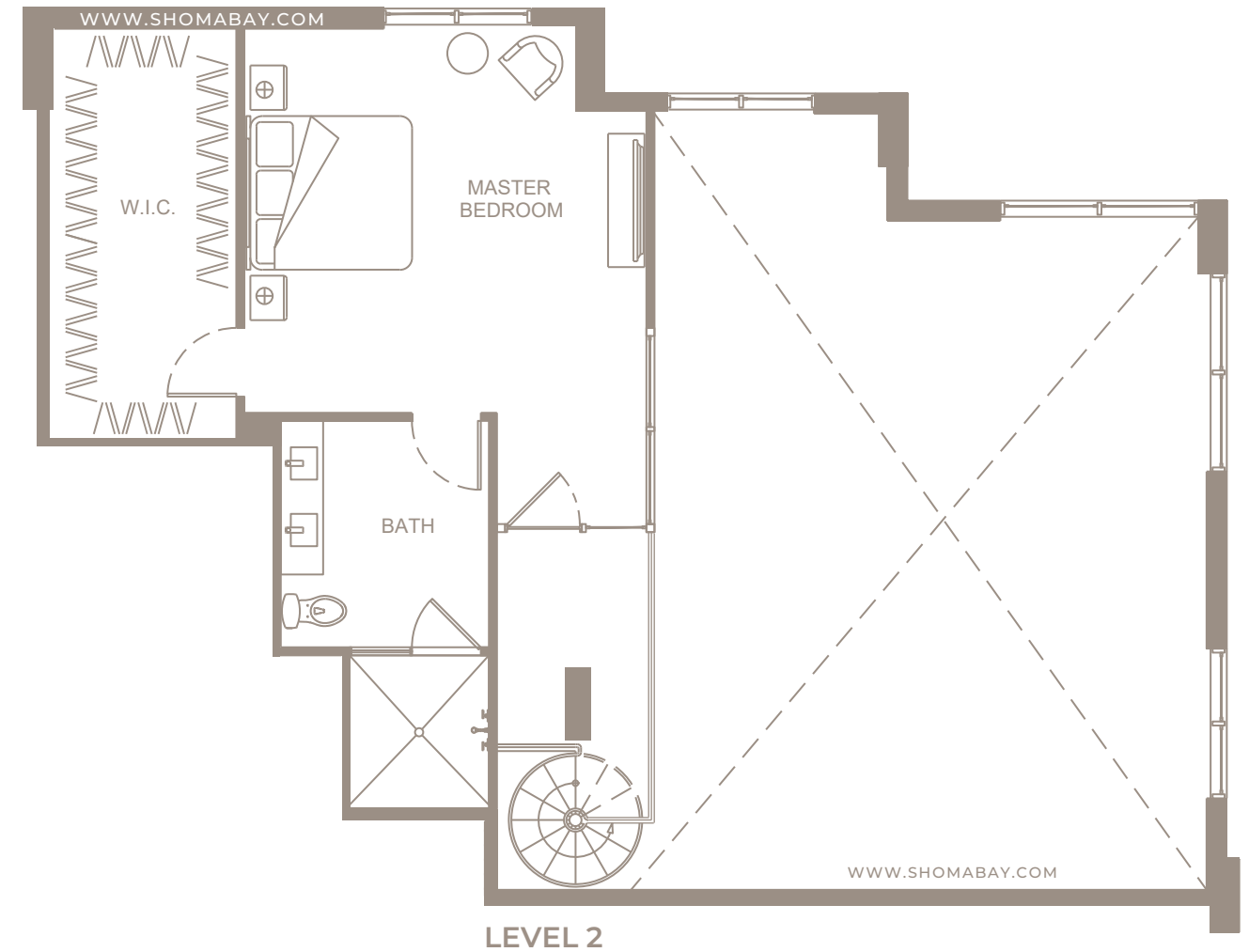
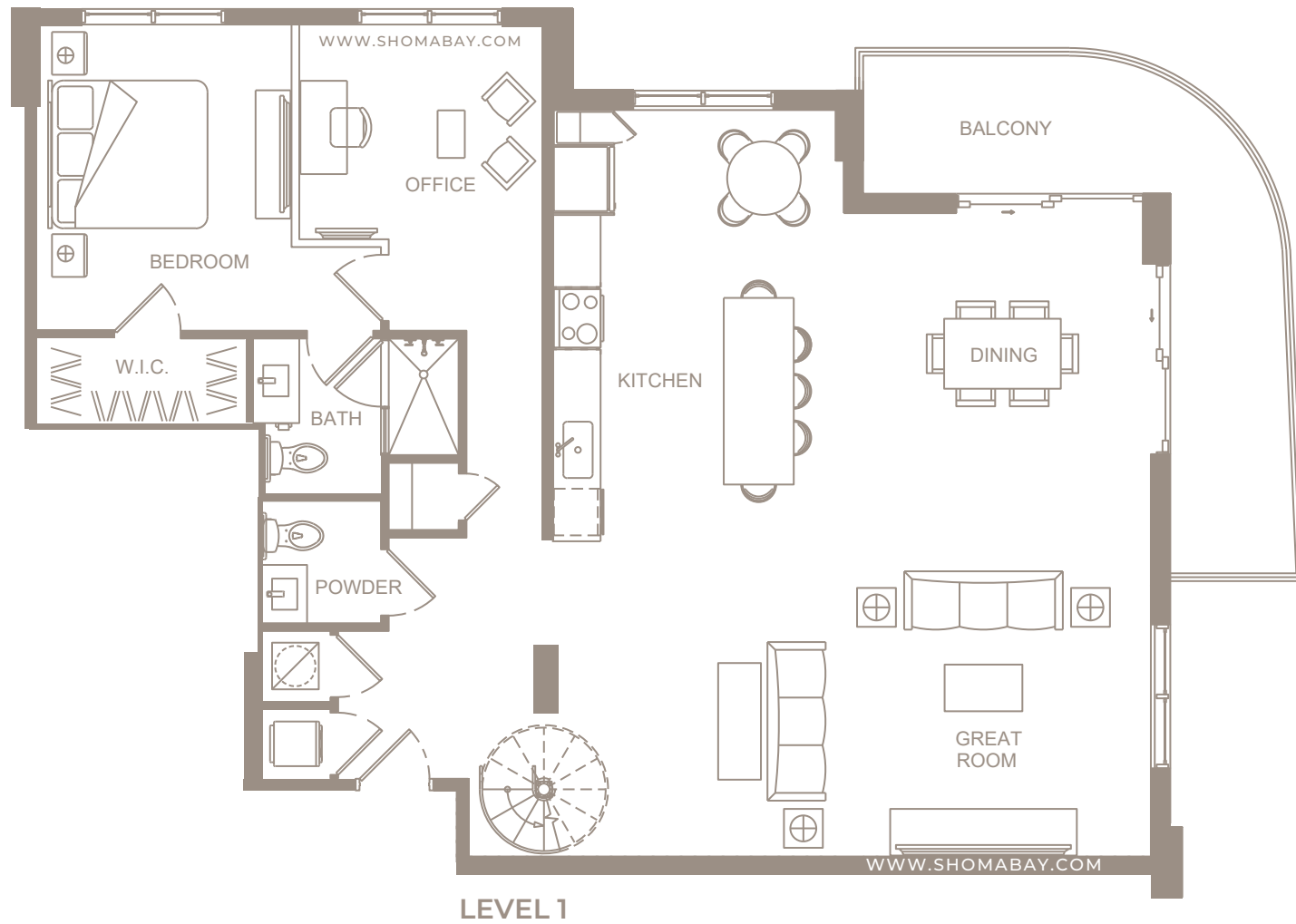
**UNIT P6 - PENTHOUSE (3BD / 3.5BTH)**

INTERIOR: 2,763 SQ.FT (256.6 m<sup>2</sup>)

EXTERIOR: 158 SQ.FT (14.7 m<sup>2</sup>)

SHOMA - Exclusive Sales & Marketing by **ISGWORLD**<sup>®</sup>

Any renderings and depictions are conceptual only and are for the convenience of reference. They should not be relied upon as representations, express or implied, of the final detail of the Units nor the views from any of the Units. ORAL REPRESENTATIONS CANNOT BE RELIED UPON AS CORRECTLY STATING REPRESENTATIONS OF THE DEVELOPER. FOR CORRECT REPRESENTATIONS, MAKE REFERENCE TO THIS BROCHURE AND TO THE DOCUMENTS REQUIRED BY 718.503, FLORIDA STATUTES, TO BE FURNISHED BY A DEVELOPER TO A BUYER OR LESSEE.



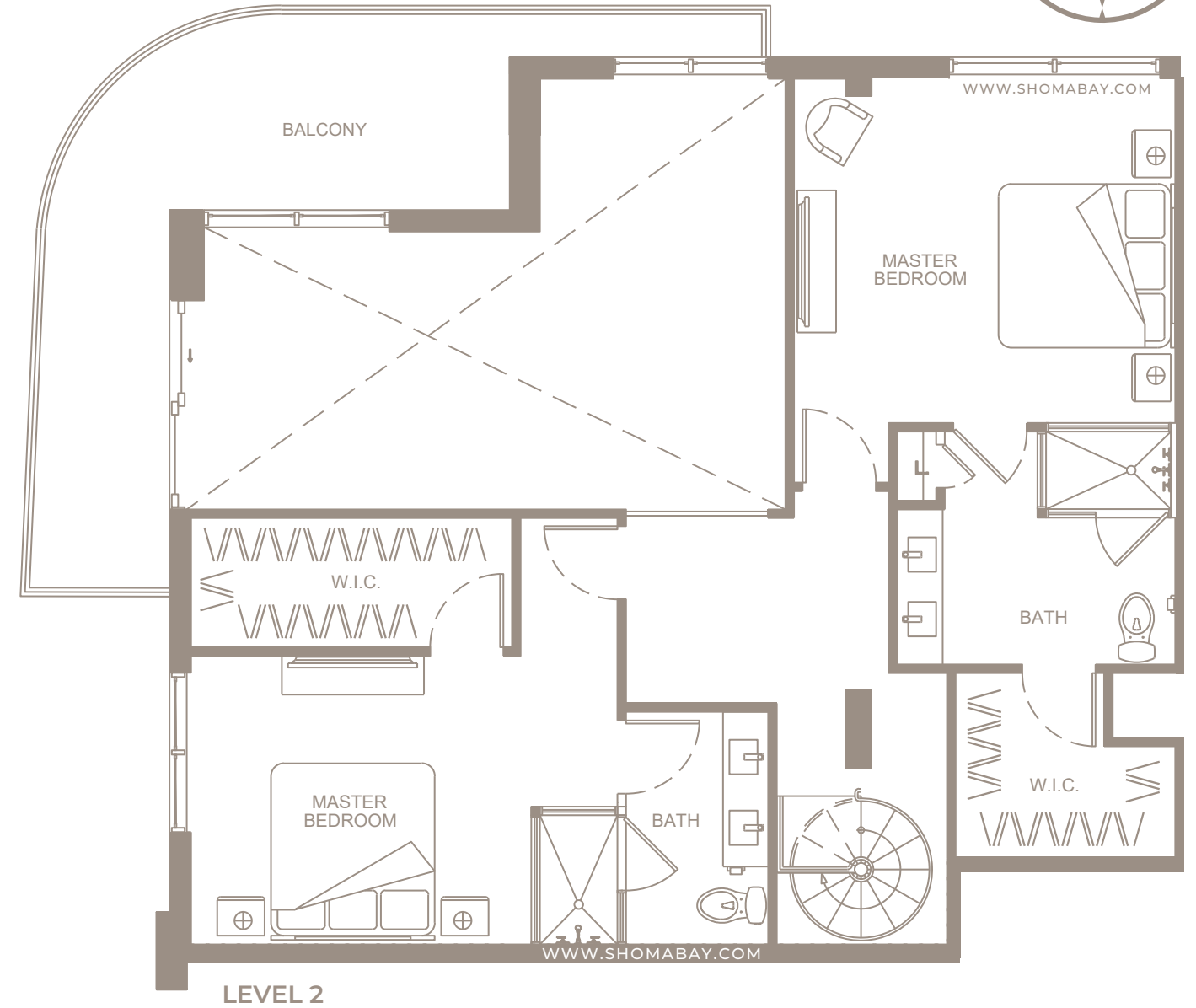
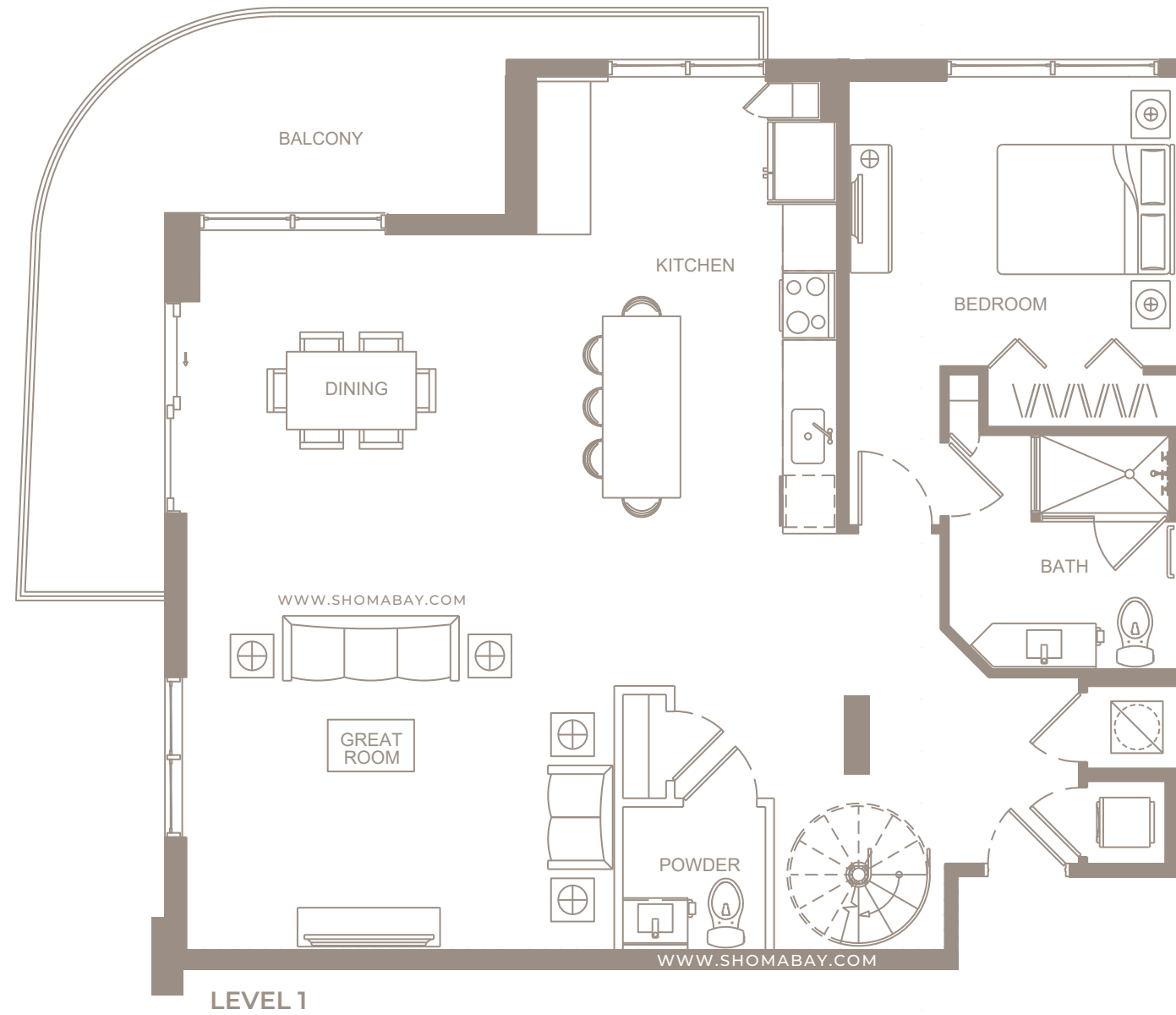
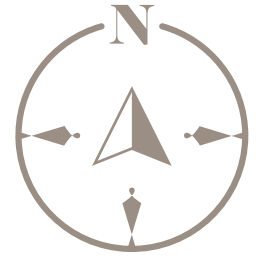
**UNIT P4 - PENTHOUSE (2BD / DEN / 2.5BTH)**

INTERIOR: 1,949 SQ.FT (181 m2)

EXTERIOR: 186 SQ.FT (17.3 m2)

SHOMA - Exclusive Sales & Marketing by **ISGWORLD®**

Any renderings and depictions are conceptual only and are for the convenience of reference. They should not be relied upon as representations, express or implied, of the final detail of the Units nor the views from any of the Units. ORAL REPRESENTATIONS CANNOT BE RELIED UPON AS CORRECTLY STATING REPRESENTATIONS OF THE DEVELOPER. FOR CORRECT REPRESENTATIONS, MAKE REFERENCE TO THIS BROCHURE AND TO THE DOCUMENTS REQUIRED BY 718.503, FLORIDA STATUTES, TO BE FURNISHED BY A DEVELOPER TO A BUYER OR LESSEE.



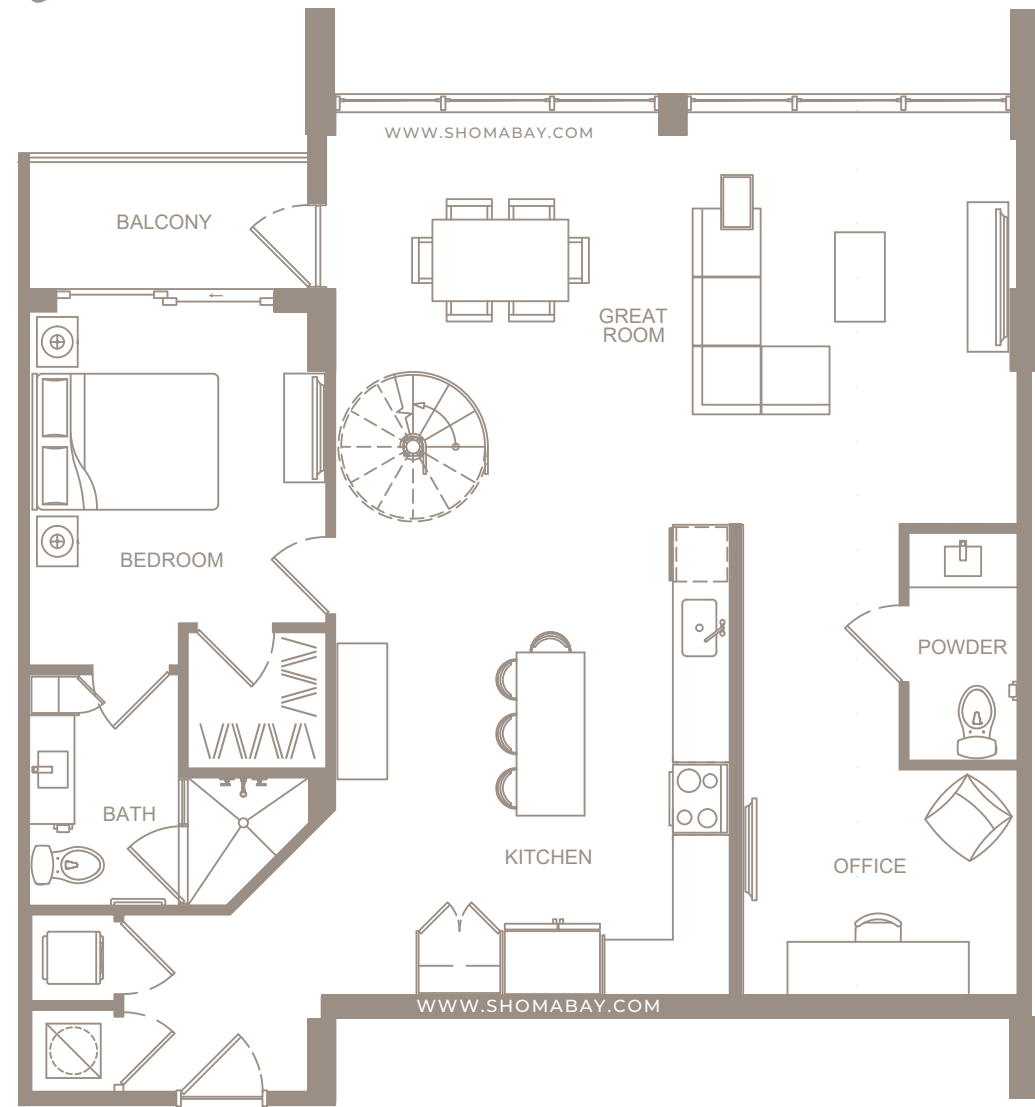
**UNIT P5 - PENTHOUSE (3BD / 3.5BTH)**

INTERIOR: 1,974 SQ.FT (183.3 m<sup>2</sup>)

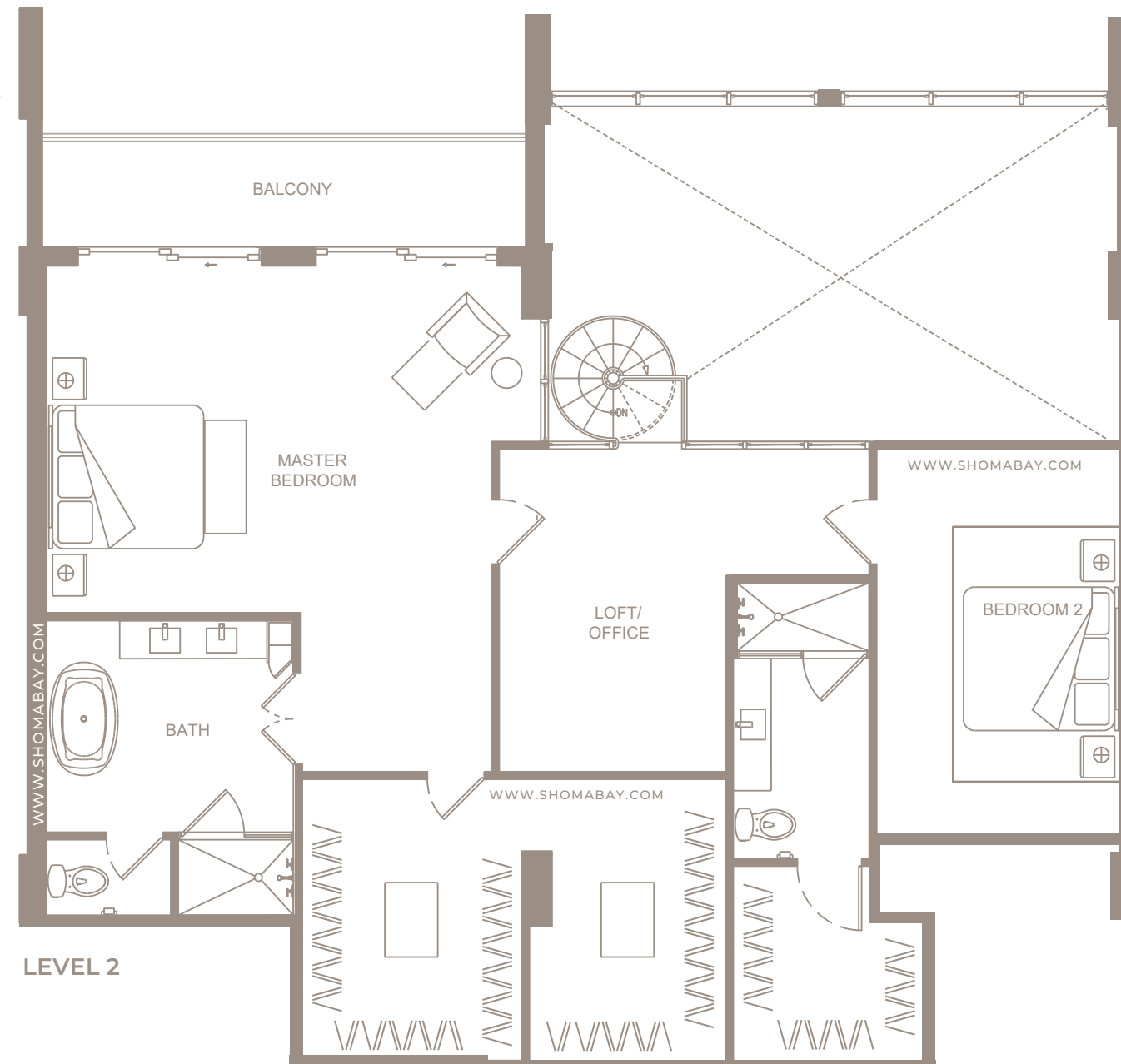
BALCONIES: 454 SQ.FT (42.2 m<sup>2</sup>)

SHOMA - Exclusive Sales & Marketing by **ISGWORLD®**

Any renderings and depictions are conceptual only and are for the convenience of reference. They should not be relied upon as representations, express or implied, of the final detail of the Units nor the views from any of the Units. ORAL REPRESENTATIONS CANNOT BE RELIED UPON AS CORRECTLY STATING REPRESENTATIONS OF THE DEVELOPER. FOR CORRECT REPRESENTATIONS, MAKE REFERENCE TO THIS BROCHURE AND TO THE DOCUMENTS REQUIRED BY 718.503, FLORIDA STATUTES, TO BE FURNISHED BY A DEVELOPER TO A BUYER OR LESSEE.



LEVEL 1



LEVEL 2

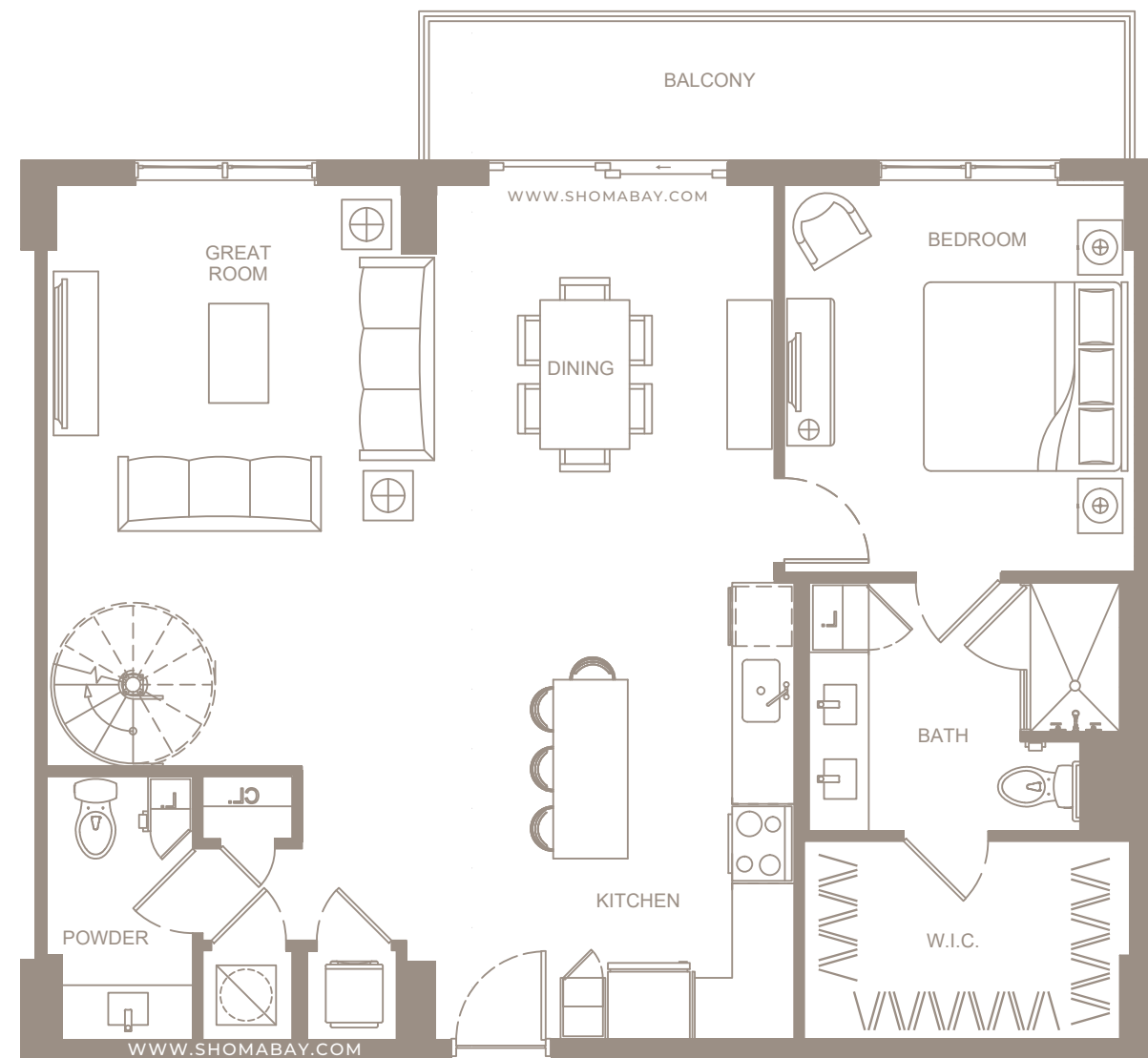
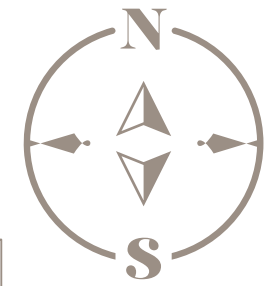
**UNIT P3 - PENTHOUSE** (3BD / 3.5BTH / OFFICE / DEN )

INTERIOR: 2,429 SQ.FT (225.6 m<sup>2</sup>)

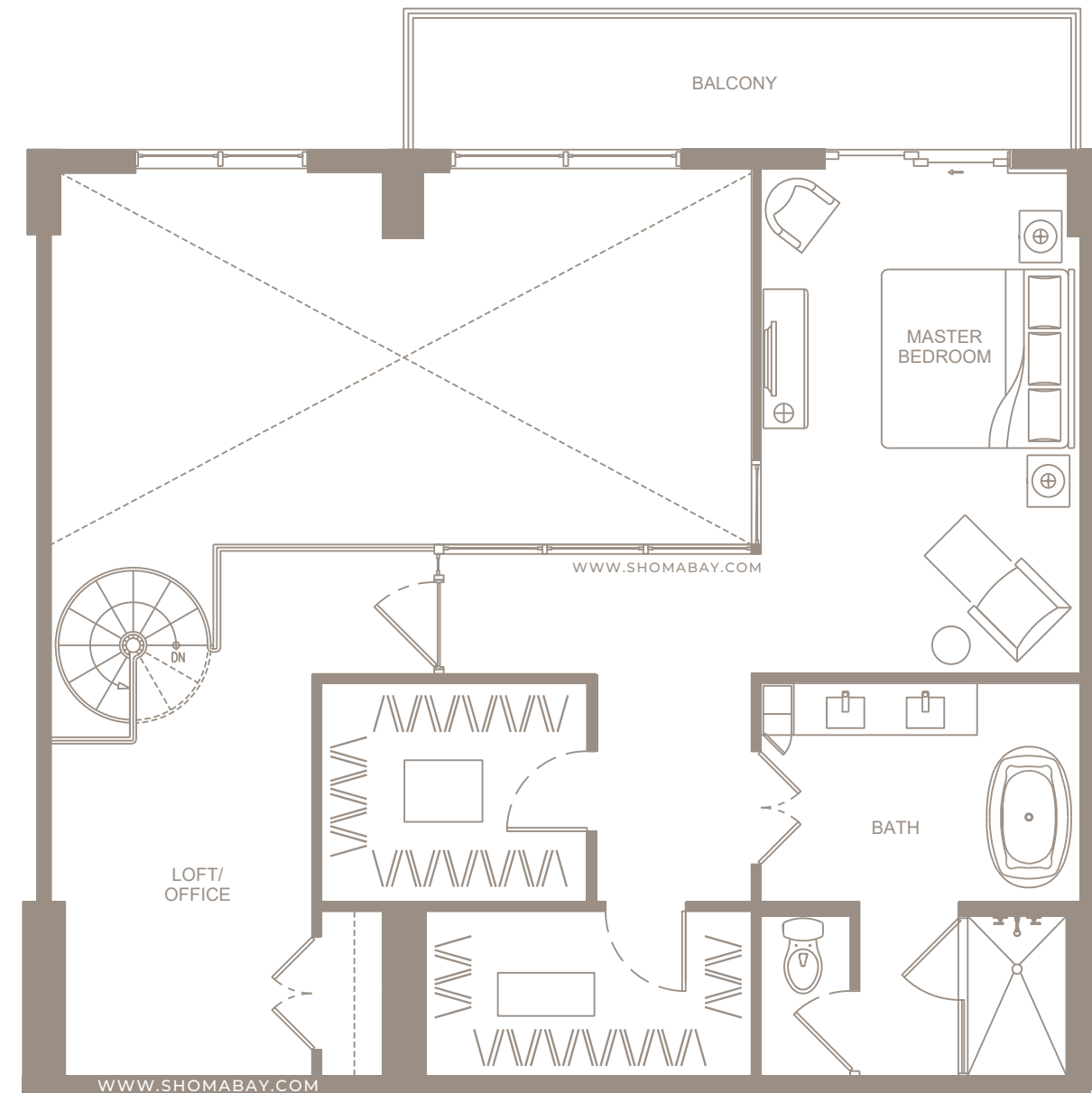
EXTERIOR: 161 SQ.FT (15 m<sup>2</sup>)

SHOMA - Exclusive Sales & Marketing by **ISGWORLD**<sup>®</sup>

Any renderings and depictions are conceptual only and are for the convenience of reference. They should not be relied upon as representations, express or implied, of the final detail of the Units nor the views from any of the Units. ORAL REPRESENTATIONS CANNOT BE RELIED UPON AS CORRECTLY STATING REPRESENTATIONS OF THE DEVELOPER. FOR CORRECT REPRESENTATIONS, MAKE REFERENCE TO THIS BROCHURE AND TO THE DOCUMENTS REQUIRED BY 718.503, FLORIDA STATUTES, TO BE FURNISHED BY A DEVELOPER TO A BUYER OR LESSEE.



LEVEL 1



LEVEL 2

**UNIT P1 - PENTHOUSE (2BD / DEN / 2.5BTH)**

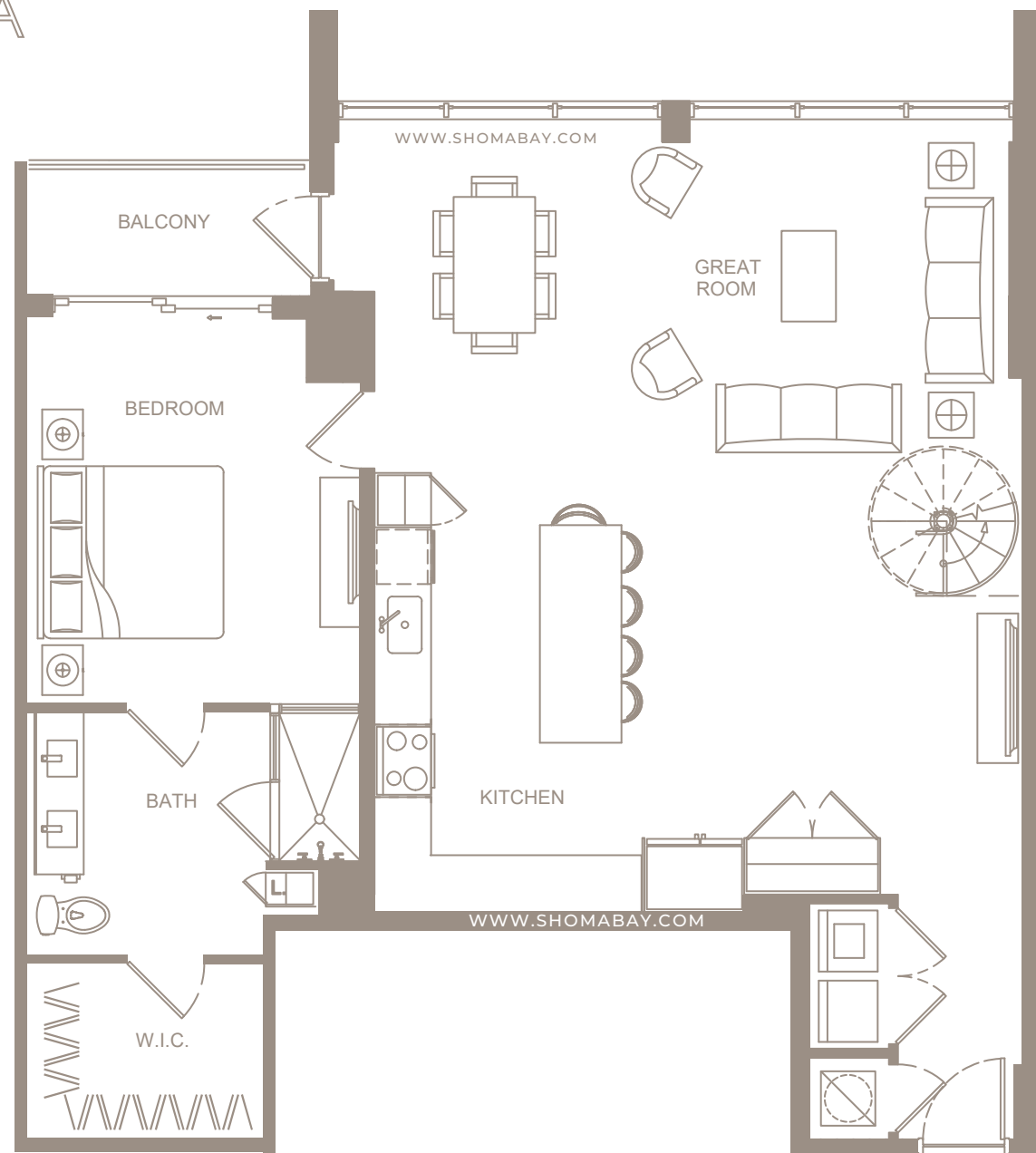
INTERIOR: 1,807 SQ.FT (167.8 m<sup>2</sup>)

EXTERIOR: 218 SQ.FT (20.2 m<sup>2</sup>)

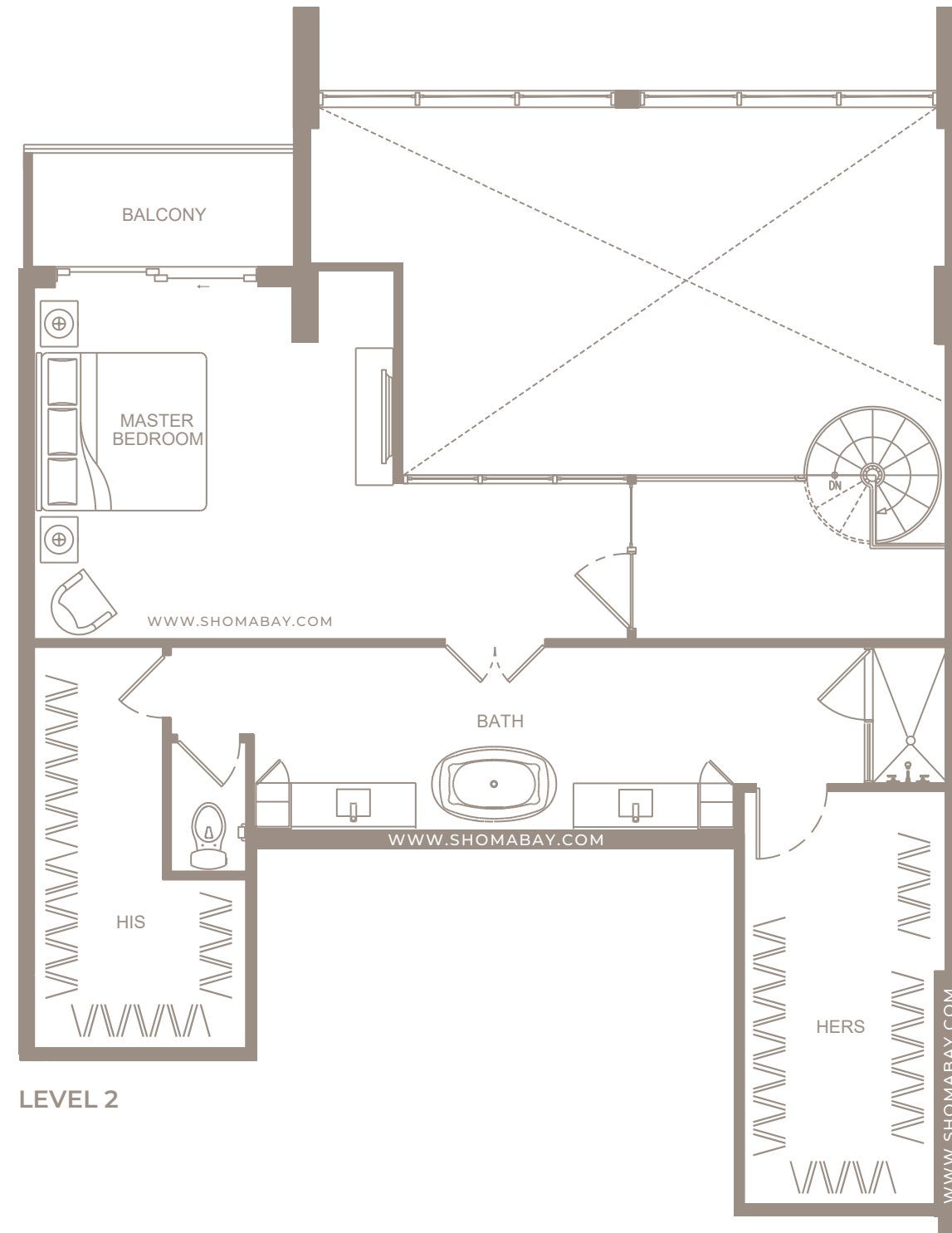
SHOMA - Exclusive Sales & Marketing by **ISGWORLD®**

Any renderings and depictions are conceptual only and are for the convenience of reference. They should not be relied upon as representations, express or implied, of the final detail of the Units nor the views from any of the Units. ORAL REPRESENTATIONS CANNOT BE RELIED UPON AS CORRECTLY STATING REPRESENTATIONS OF THE DEVELOPER. FOR CORRECT REPRESENTATIONS, MAKE REFERENCE TO THIS BROCHURE AND TO THE DOCUMENTS REQUIRED BY 718.503, FLORIDA STATUTES, TO BE FURNISHED BY A DEVELOPER TO A BUYER OR LESSEE.





LEVEL 1



LEVEL 2



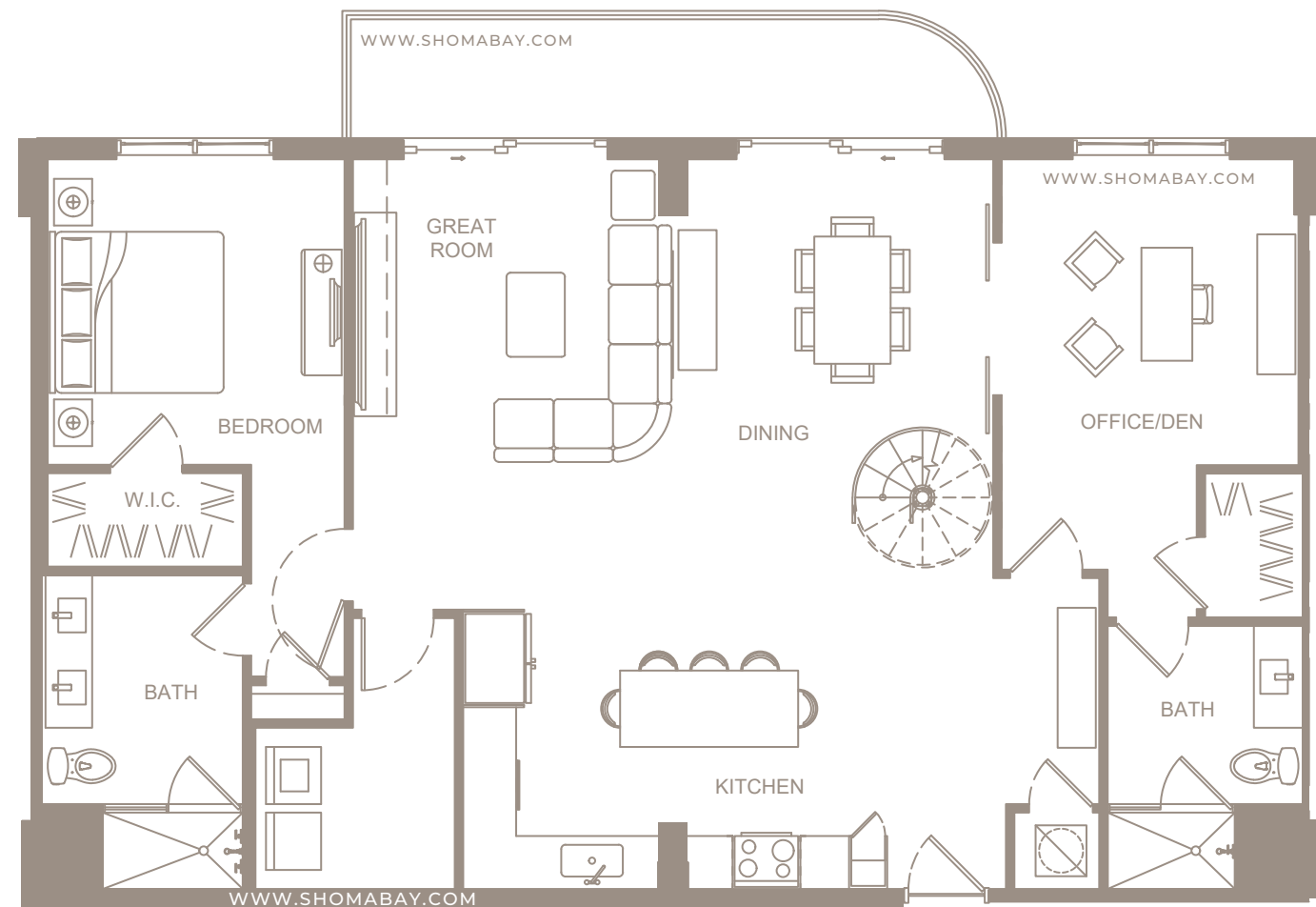
**UNIT P2 - PENTHOUSE (2BD / 2BTH)**

INTERIOR: 1,904 SQ.FT (176.8 m<sup>2</sup>)

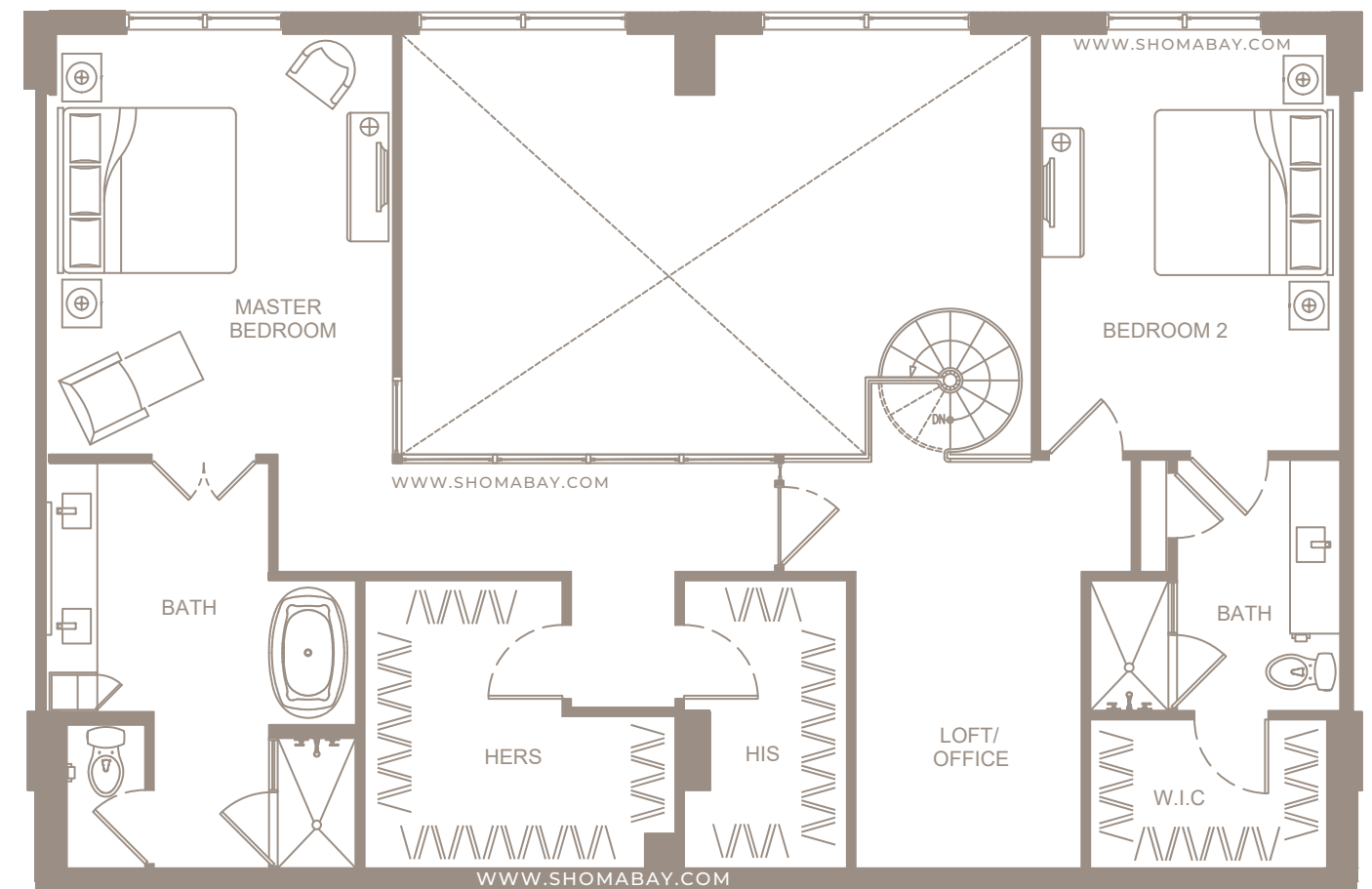
EXTERIOR: 106 SQ.FT (9.8 m<sup>2</sup>)

SHOMA - Exclusive Sales & Marketing by **ISGWORLD**<sup>®</sup>

Any renderings and depictions are conceptual only and are for the convenience of reference. They should not be relied upon as representations, express or implied, of the final detail of the Units nor the views from any of the Units. ORAL REPRESENTATIONS CANNOT BE RELIED UPON AS CORRECTLY STATING REPRESENTATIONS OF THE DEVELOPER. FOR CORRECT REPRESENTATIONS, MAKE REFERENCE TO THIS BROCHURE AND TO THE DOCUMENTS REQUIRED BY 718.503, FLORIDA STATUTES, TO BE FURNISHED BY A DEVELOPER TO A BUYER OR LESSEE.



LEVEL 1



LEVEL 2

**UNIT P7 - PENTHOUSE** (3BD / DEN / OFFICE / 4BTH)

INTERIOR: 2,570 SQ.FT (238.7 m<sup>2</sup>)

EXTERIOR: 125 SQ.FT (11.6m<sup>2</sup>)

SHOMA - Exclusive Sales & Marketing by **ISGWORLD**<sup>®</sup>

Any renderings and depictions are conceptual only and are for the convenience of reference. They should not be relied upon as representations, express or implied, of the final detail of the Units nor the views from any of the Units. ORAL REPRESENTATIONS CANNOT BE RELIED UPON AS CORRECTLY STATING REPRESENTATIONS OF THE DEVELOPER. FOR CORRECT REPRESENTATIONS, MAKE REFERENCE TO THIS BROCHURE AND TO THE DOCUMENTS REQUIRED BY 718.503, FLORIDA STATUTES, TO BE FURNISHED BY A DEVELOPER TO A BUYER OR LESSEE.